

A Social Guide to THE PEARSE MUSEUM



The Pearse Museum is located in the former home and school of Patrick Pearse and his family.

The museum is situated on 50 acres of landscaped parkland in Rathfarnham, South Dublin, about 8km from Dublin City.



The main car park is on Sarah Curran Avenue. Car parking is free.



This map will help us find our way around the park.



To get to the Museum, we will walk up the gravel path that is on the left side of the playing fields. At the gate lodge, turn right onto the avenue that leads to The Museum. It is less than half a kilometre.



Vehicular entrance to the Museum is via the main gates on Grange Road.



Parking is also available on Taylor's Lane at the junction between Taylor's Lane and The Grange Road on the R113.

There are pedestrian gates on The Grange Road and The Whitechurch road, but there is no parking.

Access to the Museum and historic rooms is through The Walled Garden. There are two entrances. One entrance is to the left of the house; or you can also come around the side of the house and walk through the courtyard.



MUSEUM RECEPTION



Covid-19 Guidelines

When you arrive at reception you will be required to sanitise your hands. It is also a requirement to wear a face mask. However, you do not have to wear a face covering if you have an illness or impairment that would make wearing or removing a face covering upsetting or uncomfortable.

When we enter the Museum we will meet some very friendly guides.



Entry is free.

The Guide will give us an outline of what we will see during our visit.

TOURS OF THE MUSEUM

Due to Covid-19, it is not possible to have a guided tour. We can explore the Museum ourselves.

We can start our visit with a self-guided tour around the exhibition on the ground floor. The exhibition is called 'WHO IS PEARSE'.



What will we see?



There are eight rooms to visit. We will turn left at 'Who Is Pearse' exhibition.

Each room tells us the story of the life of Pearse, his family and his school.

There are information boards in Irish and English in every room.

We don't want to fall and hurt ourselves, so we walk slowly around the rooms.

We will start with the story of his family and childhood.

The unfinished auto-biography is on display here.



Normally, we are allowed to open and look inside the drawers and see the wonderful collection of historic documents and artefacts. However, because of Covid-19, this is not possible during the pandemic.

There are lots of other items on open display and we can follow the story of Pearse's life through these exhibits in each of the rooms.





Padraig Pearse was a writer, teacher, Irish language campaigner and led the 1916 Easter Rising.

Don't forget to look at Pearse's very famous handwritten oration for the funeral of O'Donovan Rossa in 1915.

We will also get a chance to view video of the funeral. You will see two clear images of Pearse at the funeral. It is the only video footage of him.



In the next room, we will see the cups and saucers used by Patrick and William for their last family meal on Easter Sunday.

We will also have a chance to read Pearse's last letter written to his mother, the night before he was executed.



We will find a family accessible toilet and the men's on this floor beside the lift.
The ladies toilets are on the 1st floor.
There are wheelchair accessible toilets on each floor.

Take the lift to the 1st floor to stroll around the historic rooms or if you prefer we may also come back to reception area and take the stairs.

THE HISTORIC ROOMS

What will we see?

We walk slowly through these beautiful historic rooms. Pearse's love of books and art is evident in all the rooms. Be sure to take a look at the high ceilings and don't miss the beautiful fireplaces.

We will start our journey in the Art Gallery.

Can you find the special English edition of The Koran in the bookcase?



The school Art Gallery has some lovely original artworks.



The family Sitting-Room



Pearse's Study where he did much of his writings.



The Entrance Hall



The boys arrived here to school. It is from here the brothers left home for the last time in 1916.



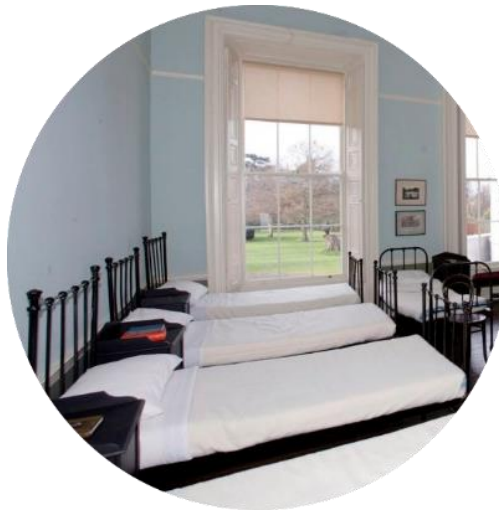


William Pearce's sculpture works.

We will go back through the Art Gallery to the dormitory.

We must remember not to sit or jump on the beds.

Some of these beds were used by the boys and are over 100 years old.



When we leave the dormitory, we climb a few steps to continue our journey.

There is a handrail here if we need to use it.



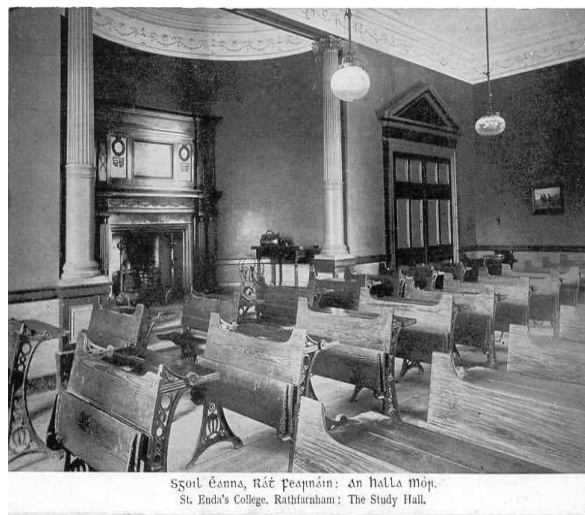
The School Museum



We will see samples of artefacts that the boys collected for their own school museum

THE HALLA MÓR

Originally an 1890s Billiard room, it later became a study hall.



Before we leave The Halla Mór, we can visit the school chapel.





We have one more floor to visit. We can take the lift or we have a choice of 2 sets of stairs.



Here we can see panels from a pulpit carved by James Pearse in 1878.

The rooms beside the conservatory are used for temporary exhibitions

We have now finished our tour of the historic rooms and the exhibition.

We will go downstairs and out through the same door that we came in. We will arrive into The Walled Garden.

Pearse wrote outdoor pageants, set in ancient Ireland; the students performed some of them here.



We can walk down to the middle of the garden. Here we can see the poem, The Wayfarer, written by Pearse, engraved in stone around the fountain.



Padraig Pearse loved nature and we can visit the Nature Room in the courtyard. Unfortunately closed for the moment due Covid-19



And in corner of the courtyard you can see a school room. Pearse converted old farm buildings into classrooms.



There is a café here too. They serve snacks and lunch. It is open daily.

Public transport

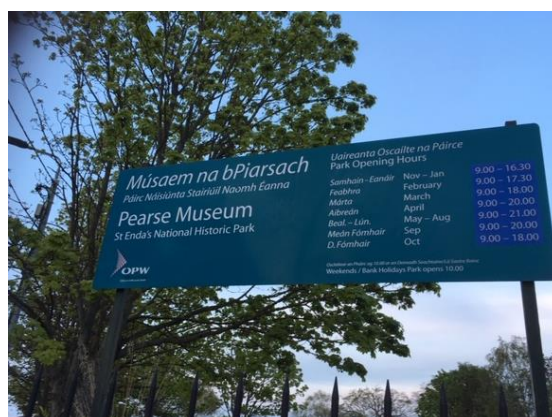
Dublin Bus: No 16 bus.
Towards city/Dublin Airport: Stop: Grange Road, The Priory no. 2992
Towards Ballinteer: Stop: Grange Road, The Priory, no. 7068

Go-Ahead Bus No. 175 bus
From Kingswood to UCD Stop: Taylors Lane, Grange Golf Club No. 7447
From UCD to Kingswood Stop: Taylors Lane, Grange Golf Club No. 7448

Museum Opening Hours – 7 days

- November – January 0930-1600
- February 0930-1700
- March – October 0930-1730

St Enda's Park has different and longer opening times.



Contact Details

www.opw.ie/pearsemuseum

Email pearsemuseum@opw.ie

Telephone: 00353 1 4934208

Twitter: @pearsemuseumopw

www.facebook.com/pearsemuseumstendaspark

Due to Covid-19 restrictions visitor numbers are limited. We would encourage you to book in advance

**Pearse Museum
St Enda's Park
Rathfarnham
Dublin 16
D16Y7Y5**

*The Office of Public Works
Oifig na nOibreacha Poiblí*



*Pearse Museum
Músaem na bPiarsach*



OPW Oifig na
nOibreacha Poiblí
Office of Public Works