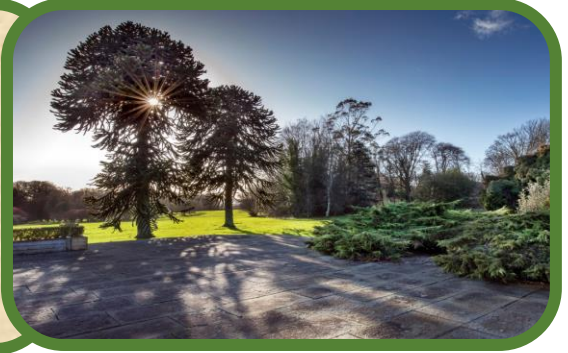


John F. Kennedy Arboretum



Social Guide

A trip to the John F. Kennedy Arboretum

Introduction

We are going on a trip to the John F. Kennedy Arboretum.

The arboretum has a plant collection that is really important and it is located near New Ross, Co. Wexford.

In this story, we will learn about how to enter the arboretum, see some of the people who work there and find out what we can expect during our visit.



Arriving

There is one main entrance and when we arrive we go through the main gate and stop at the Entrance Kiosk.

An arboretum is a Latin word for tree and we know we are going to see a lot of wonderful trees here.



At the Kiosk we will meet one of the staff and we will pay our entrance fee. If we have an OPW Heritage Card or Annual Season Pass for the arboretum we can show one of these instead of paying money. We then follow the signs to the car park. The car park has signposted car park spaces for people with disability.



The Visitor Centre

We can see the Visitor Centre from the car park and this is where we can pick up a map and this will help us get around. There is also a lot to see at the Visitor Centre.

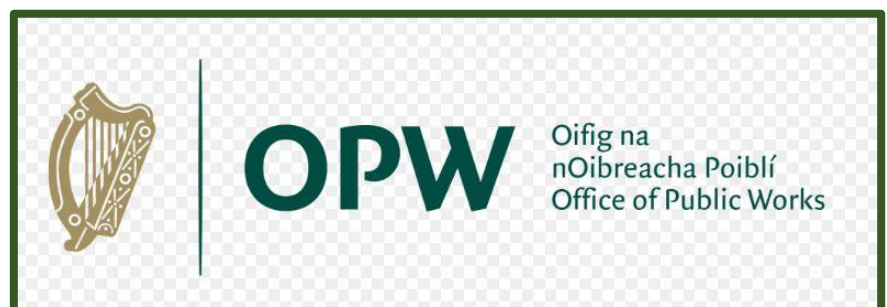


The Staff



At the Visitor Centre we will meet one of the friendly and welcoming Guide Team and they will tell us all about the arboretum. They will answer any questions we have.

All of the Staff here wear the OPW logo on their uniforms and they all have radios.



Exhibitions

There are two exhibition rooms at the Visitor Centre.

One of them is dedicated to the late President John F Kennedy (the arboretum is named after him). There is a lot to see here.



The other Exhibition tells us all about the arboretum and it explains what we can see outside. It also tells us how far we have to walk to reach different parts of the arboretum.



Where to go

We can always head out on our own with our map and follow the signs around the arboretum and see all the great things that are here. There is a fabulous lake with lots of ducks and wildlife. We can bring a picnic or stop at the café for refreshments. There is a wonderful playground beside the café which families really enjoy. There are toilets in the Visitor Centre and the Café and there are Disabled Toilets at both of these places.



If we are unable to find our family or friends we should ask a member of staff to help us. We now know all the staff here have the OPW logo on their clothes. We can also phone the reception/office, if we are out in the arboretum and need help (the telephone number is on the map).



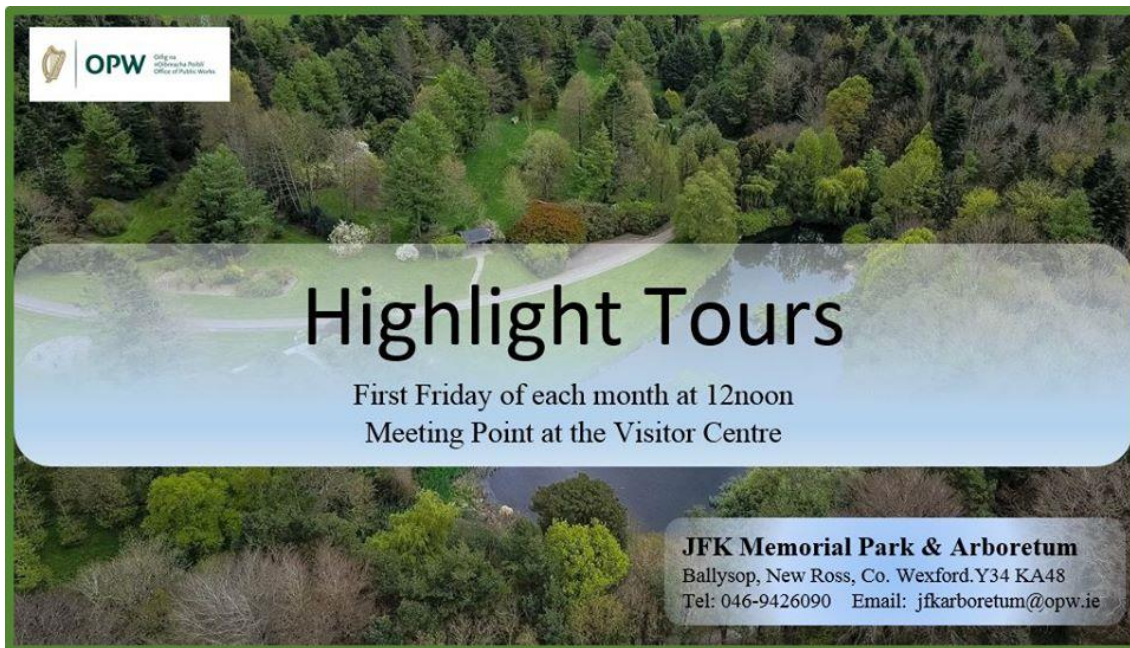
Tours

There are always terrific things happening here. One of the great things are the free guided tours from March to October and these are on every day at 12noon and 3pm. We can also book a tour at another time if we want to by telephoning ahead of our visit. Also, if we have a disability we can book a tour and go around in a buggy with one of the Guide Staff.

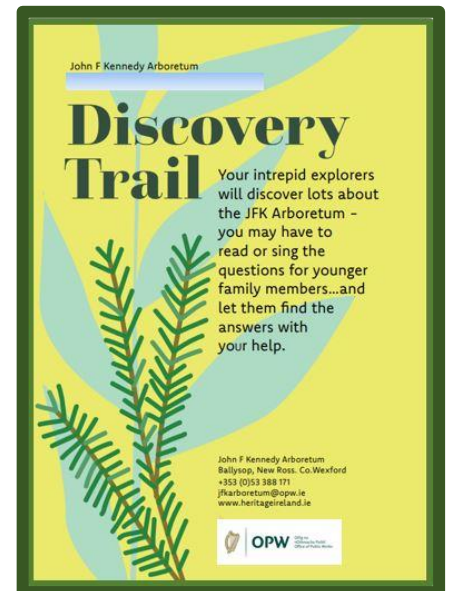
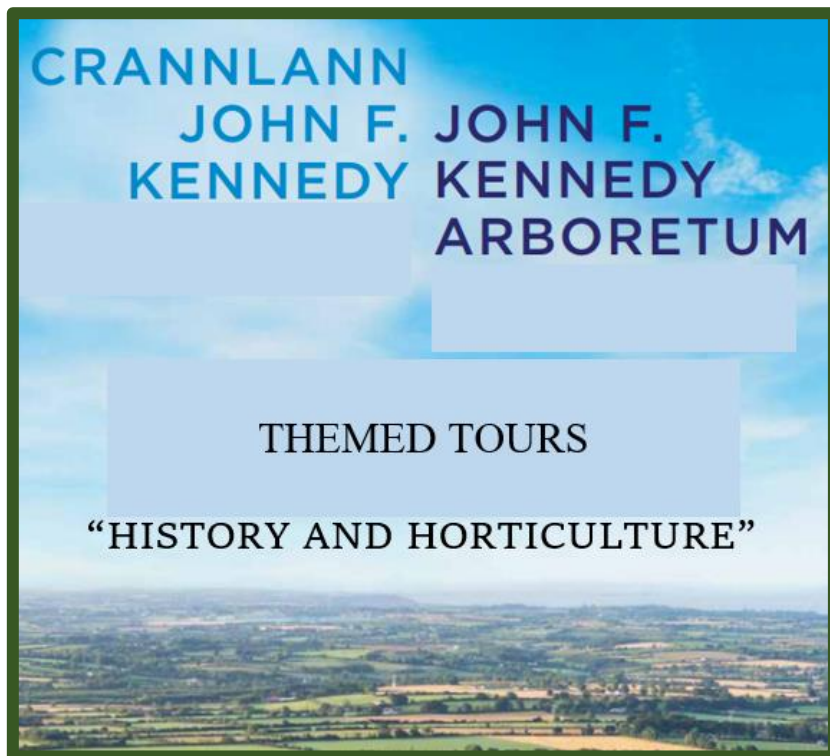


Events

There are always a lot of wonderful events happening here and we can find out about these on the Facebook/Instagram page for the arboretum or we can always phone ahead of our visit to see what is happening.



Events

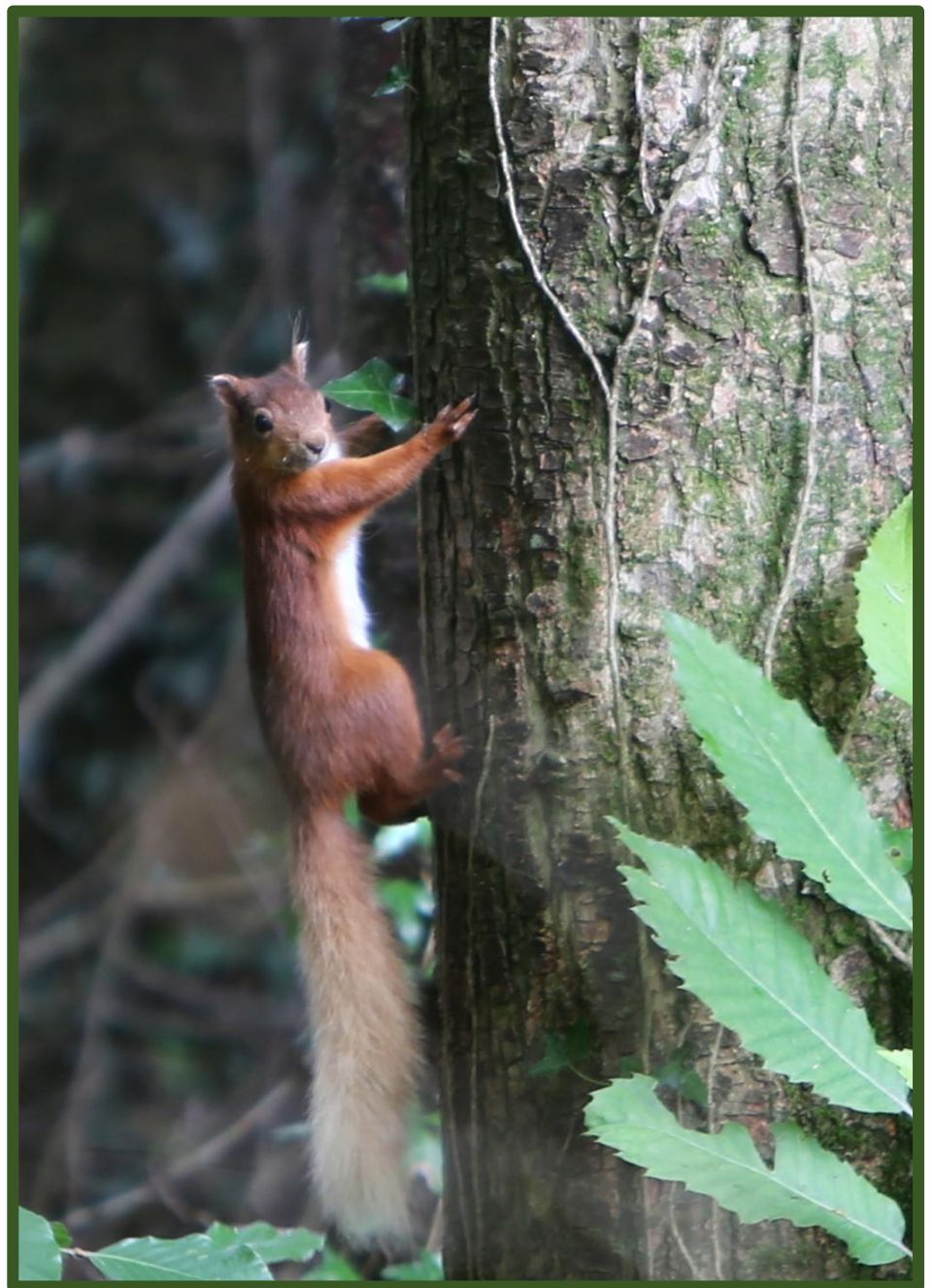


Outdoor Classroom



Dogs at the Arboretum

We are allowed to bring our dogs to the arboretum but we must keep them on a lead at all times. This is very important as we do not like dogs to roam free and upset other visitors. Also if dogs are not on a lead they might frighten some of the amazing wildlife here. The arboretum is a very important home for Red Squirrels. We must pick up after our dogs as well and bring it home with us to put in the bin there. Assistance dogs are always welcome and the staff love meeting and talking to people with their dogs.



Leaving the Arboretum

When we leave the arboretum we bring all our litter with us and we can put it in the right bin at home. We leave from the car park and follow the exit signs. We must be careful to watch out for visitors crossing the road. Sometimes the arboretum can be very busy with bus groups and school tours so we must watch out for these as well. We will drive slowly to the exit and then take the road home or we can always travel on to the next OPW site on our 'must see list' of places to go.



More Information

Everyone is welcome at the John F. Kennedy Arboretum.

If we need any assistance or any special help we can phone/email ahead or ask our families/friends to phone/email for us:

Tel: +353 (0) 46 9426090

Email: to jfkarboretum@opw.ie.

We can also look at the Website and Facebook/Instagram pages:

<https://www.heritageireland.ie/en/south-east/thejohnfkennedyarboretum/>

<https://www.facebook.com/jfkarboretum/>

<https://www.instagram.com/jfkarboretum/>

The John F. Kennedy Arboretum is one of the many amazing OPW Heritage Sites and they are all beautiful places to visit.

