

A Visit to Kilmainham Gaol.

We are going to take a tour of Kilmainham Gaol. Gaol is just another word for a prison. The Gaol was built more than 200 years ago. There are no prisoners in Kilmainham Gaol now, but a long time ago, thousands of men, women and children were held here. Some of the prisoners were very important people and we will hear about them during our visit.



In this story, we will learn what to do when we arrive at Kilmainham Gaol. We will meet some of the people who work here, and find out what we will see during the visit.



We start our tour in the visitor centre, which is located next to the Gaol.



This is the main entrance to the visitor centre. We have lots of visitors, so it can be very busy and a bit noisy.

Many of the visitors and tour guides wear a face covering.



When we arrive, we clean our hands using the hand sanitiser.



This is the entrance hall

A tour guide will check our tickets and show us where the tour begins.



We can also collect tickets at the reception desk next to the entrance hall.



This is the courtroom in the visitor centre.

We wait here for our guided tour to start.



One of the tour guides will meet us and show us around the prison.



The tour guide will tell us interesting stories about the prison and the prisoners. The tour guides are very friendly and we can ask them lots of questions.

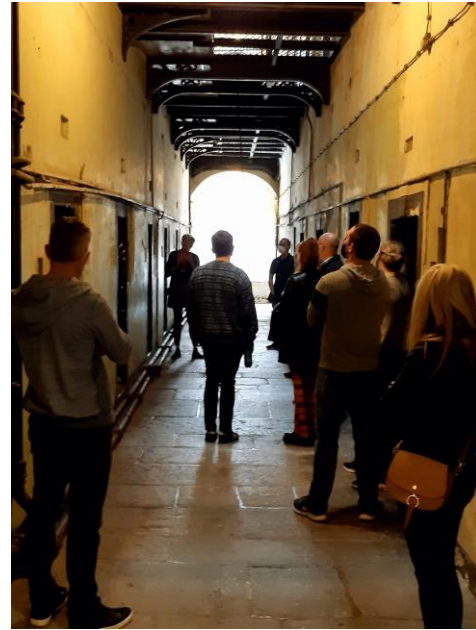
We stand beside our family and friends during the tour.



We can take photographs and even look inside the cells

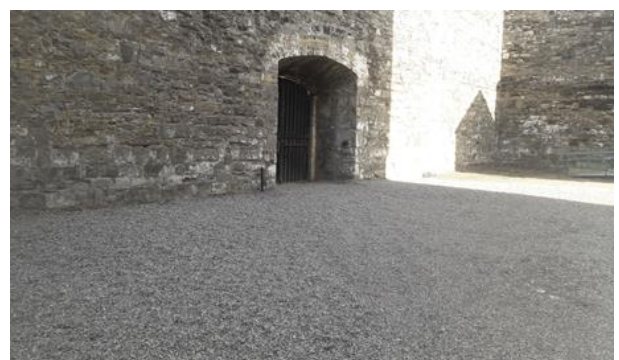


This is the oldest part of the prison.
We might feel cold here because
there is no heat in the building.



We walk slowly because the prison
is very old and the floor is a bit
bumpy.

We will also visit some of the prison yards. There are lots of stones on the
ground. We need to be very careful so we don't fall.





This is the last stop on the tour. The tour guide will say goodbye here.

After the tour, we can visit the museum.



The museum has information to read and many pictures of the prison and the prisoners.

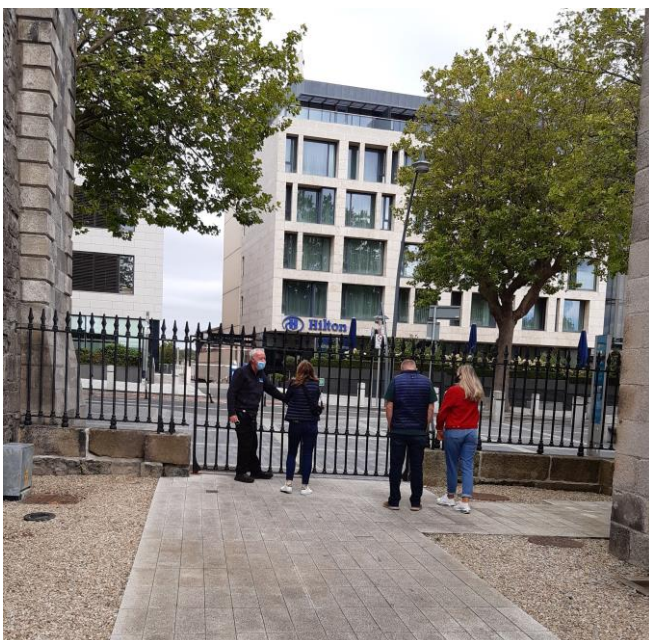
We can also see lots of objects belonging to the prisoners and the prison guards.





There are signs in the museum to keep us safe and help us find our way around.

Before we leave the museum, we clean our hands.



We use this exit gate to leave Kilmainham Gaol after our visit.