



Dublin Castle

Heritage Sites of Ireland Trade Catalogue 2023

Dublin



Heritage Ireland
OPW



Group Trade Information

1. Groups and trade ... explore more

Bring your group to visit an historic place for a great day out.

- If you are a public group or in the travel trade and have customers for group travel, FIT or MICE our staff are delighted to present memorable experiences at over 70 historic attractions.*
- Our guides excel in customer service and storytelling that enthralls and engrosses the visitor, while offering a unique insight into the extraordinary legacy of Ireland's iconic heritage.
- Join our mailing list for more information on www.heritageireland.ie
- Contact each site directly for booking – details in Groups/Trade Catalogue

2 Group Visit Benefits

- Group Rate – up to 20% off** normal adult admission rate (min. 10 at most sites)
- One free tour leader per group booking
- Free once-off familiarisation visit
- Ability to amend/cancel bookings free of charge
- Coach parking at many of our sites
- Use of tour groups own wireless transmission whisper system allowed. (This does not include open audio loudspeakers.)
- Some of our sites have their own guided wireless transmission system/audio guide provided free of charge.
- Fast track admission for pre-booked groups
- Exclusive guided tours (some sites have specific language guided tours)
- Specific language audio-visual films in some sites for pre-booked tours
- Access to OPW Tour Operator Voucher Scheme (TOVS). Payment by monthly invoice. Email us at toursopsaccounts@opw.ie

*2023 rates will change in 2024.

2024-2027 rates will be made available on heritageireland.ie

Children under 12 visit free but must be accompanied by an adult.

**2023 opening dates are listed as of 20/01/23 please check with sites directly for exact opening dates.

3 Plan Your Itinerary

- For inspiration about passage tombs, historic castles, Christian sites and historic houses and gardens throughout Ireland.
- From brunch to banquets – facilities at sites, varied events, exhibitions and so much more.
 - Wild Atlantic Way
 - Ireland's Ancient East
 - Dublin
 - Ireland's Hidden Heartlands

4 Tour Operators Voucher Scheme – contact us

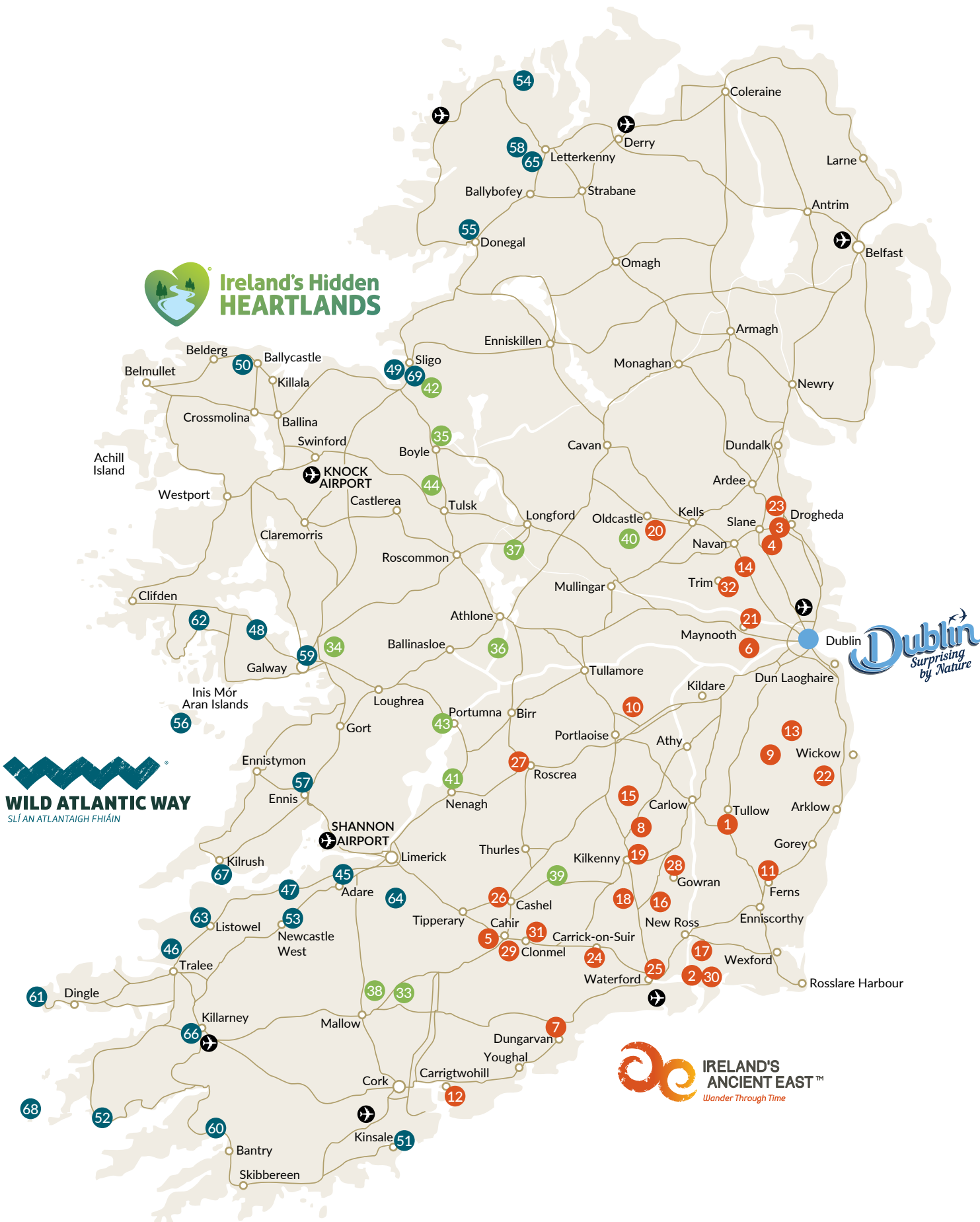
- Visitor Services, Office of Public Works, 20 Lakeside Retail Park, Ballindine Road, Clarendon, Co Mayo, F12 DK30, Ireland.
T: +353 (0)1 647 6000
E: toursopsaccounts@opw.ie
- Join our mailing list for more information on www.heritageireland.ie



Heritage Ireland
OPW

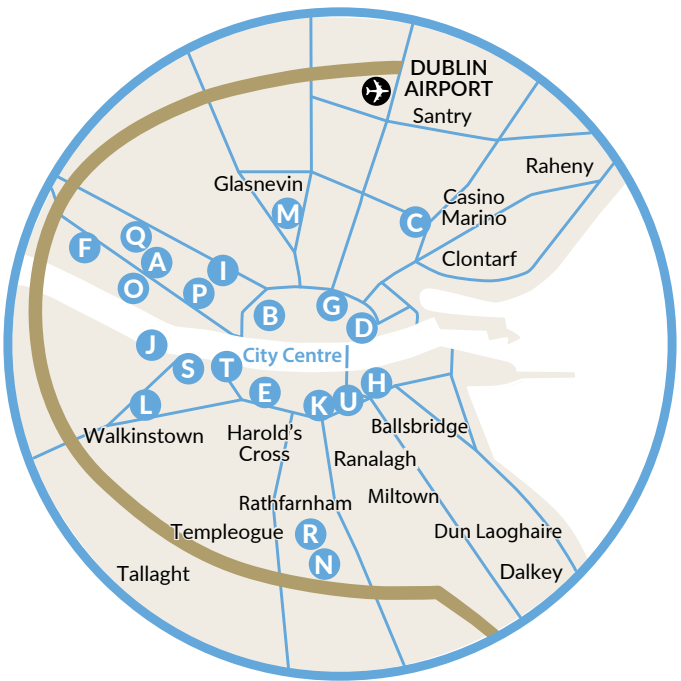
Heritage Services

Ireland's Iconic Heritage Sites



Dublin

- A Áras an Uachtaráin
- B Arbour Hill Cemetery
- C Casino Marino
- D Custom House Visitor Centre
- E Dublin Castle
- F Farmleigh House and Estate
- G Garden of Remembrance
- H Government Buildings
- I Grangegorman Military Cemetery
- J Irish National War Memorial Gardens
- K Iveagh Gardens
- L Kilmainham Gaol
- M National Botanic Gardens
- N Pearse Museum – St Enda's Park
- O Phoenix Park
- P Phoenix Park – People's Flower Gardens
- Q Phoenix Park Visitor Centre – Ashtown Castle
- R Rathfarnham Castle
- S Royal Hospital Kilmainham
- T St Audeon's Church
- U St Stephen's Green



Ireland's Hidden Heartlands

- 33 Anne's Grove
- 34 Athenry Castle
- 35 Boyle Abbey
- 36 Clonmacnoise
- 37 Corlea Trackway Visitor Centre
- 38 Doneraile Court and Wildlife Park
- 39 Famine Warehouse 1848
- 40 Fore Abbey
- 41 Nenagh Castle
- 42 Parke's Castle
- 43 Portumna Castle and Gardens
- 44 Rathcrogan Visitor Centre

Ireland's Ancient East

- 1 Altamont Gardens
- 2 Ballyhack Castle
- 3 Battle of the Boyne - Oldbridge Estate
- 4 Brú na Bóinne Visitor Centre
- 5 Cahir Castle
- 6 Castletown House and Parklands
- 7 Dungarvan Castle
- 8 Dunmore Caves
- 9 Dwyer Mc Alister Cottage
- 10 Emo Court and Gardens
- 11 Ferns Castle
- 12 Fota Arboretum and Gardens
- 13 Glendalough Visitor Centre
- 14 Hill of Tara
- 15 Heywood Gardens
- 16 Jerpoint Abbey
- 17 JFK Arboretum
- 18 Kells Priory
- 19 Kilkenny Castle
- 20 Loughcrew
- 21 Maynooth Castle
- 22 National Botanic Gardens – Kilmacurragh
- 23 Old Mellifont Abbey
- 24 Ormond Castle
- 25 Reginald's Tower
- 26 Rock of Cashel
- 27 Roscrea Heritage (Castle and Damer House)
- 28 St Mary's Church Gowran
- 29 Swiss Cottage
- 30 Tintern Abbey
- 31 The Main Guard
- 32 Trim Castle

Wild Atlantic Way

- 45 Adare Castle
- 46 Ardfert Castle
- 47 Askeaton Castle
- 48 Aughnacore Castle
- 49 Carrowmore Megalithic Cemetery
- 50 Céide Fields
- 51 Charles Fort
- 52 Derrynane House and Gardens
- 53 Desmond Castle Newcastle West
- 54 Doe Castle
- 55 Donegal Castle
- 56 Dún Aonghasa
- 57 Ennis Friary
- 58 Glebe House and Gallery
- 59 Hall of the Red Earl
- 60 Ilnacullin (Garinish Island)
- 61 Ionad an Blascaoid
- 62 Ionad Cultúrtha an Phiarsaigh, Connemara – Pearse's Cottage
- 63 Listowel Castle
- 64 Lough Gur
- 65 Newmills Corn and Flaxmills
- 66 Ross Castle
- 67 Scatterry Island
- 68 Skelligs
- 69 Sligo Abbey



Opening Hours

17th March to 5th November 2023

Daily: 10.00 – 17.00

Last admission 45mins before closing

Location

Casino Park, off Malahide Road,
Dublin 3, D03 HH70

5km north of Dublin City.
20 mins by car to Dublin Airport.

Discover the secrets of Ireland's eighteenth century miniature architectural masterpiece.

The Casino was designed as a pleasure house for James Caulfeild, 1st Earl of Charlemont by Sir William Chambers, one of the finest architects of the time. On return from his grand tour of Europe in 1754, Charlemont and Chambers created a unique and intriguing garden temple from which to overlook the magnificent panorama of Dublin Bay.

The Casino, meaning small house, surprises visitors as they discover the remarkable secrets of this architectural gem. The lavishly decorated and compact exterior cleverly disguises an interior of 16 rooms displaying intricately ornate Georgian motifs. Richly patterned marquetry floors and beautifully executed plasterwork act as an historical backdrop to the Casino's past which is lovingly brought to life by our friendly and knowledgeable tour guides. The unique interiors of the building showcase the expertise of 18th century artists and designers.

We offer our visitors the opportunity to participate in a wide variety of cultural events such as exhibitions, musical performances and cultural events throughout the year. A small park surrounds the Casino with wrought iron seating for viewing and picnics.

Highlights

- Architectural tricks of the building include faux windows, gib doors, hollow columns and disguised chimneys.
- Original drawing by the architect William Chambers is displayed in the Casino.
- The building was heavily influenced by Lord Charlemont's Grand Tour, which lasted a record nine years through Europe, Turkey and Egypt.

Visitor Experiences

EXPERIENCE	DESCRIPTION	FITNESS LEVEL	MIN/MAX NUMBERS	DURATION (APPROX.)	PRICE PER PERSON
Guided Tour	<p>Our professional and experienced guides offer guided tours tailored to suit the general public and families, special interest groups and educational school visits on a variety of themes and levels of interest including:</p> <ul style="list-style-type: none"> History Art and architecture General interest Secret Plans and Clever Tricks Fun and informative tours for all 	<p>Moderate.</p> <p>Building is accessed by a flight of stone steps.</p> <p>Top floor is accessed by wooden staircase.</p> <p>Wheelchair access to grounds and exterior only.</p>	Min. N/A Max. 25	60 minutes	€7.00 Adult €3.00 Child €5.00 Senior/Group €12.00 Family U12's Free
Group Bookings	<p>Special interest groups and any groups of more than 10.</p> <ul style="list-style-type: none"> General interest tours Art/Architectural tours Social History tours Maths/Geometry tours <p>Free admission for all primary and secondary schools. T&Cs apply. See www.heritageireland.ie/en</p>	<p>Moderate.</p> <p>Building is accessed by a flight of stone steps.</p> <p>Top floor is accessed by wooden staircase.</p> <p>Wheelchair access to grounds and exterior only.</p>	Min. N/A Max. 50	90 minutes Group bookings on the half hour	€5.00

On-site Facilities

- Free car and coach parking
- Toilets.

CAUTION: Children must be supervised at all times. Steep drops at lions and parapet.

Booking Details

T: +353 (0)1 833 1618 **E:** casinomarino@opw.ie

Languages

N/A

Parklands/Walks

Small parkland around the building with seating.

Tea Rooms

None.

Nearby

Croke Park and Museum, Historic Malahide Castle, Glasnevin Cemetery Museum, Howth Fishing Village, National Botanic Gardens, Bull Island Bird Sanctuary, Clontarf Seafront Promenade, St. Anne's Park and Red Stables.

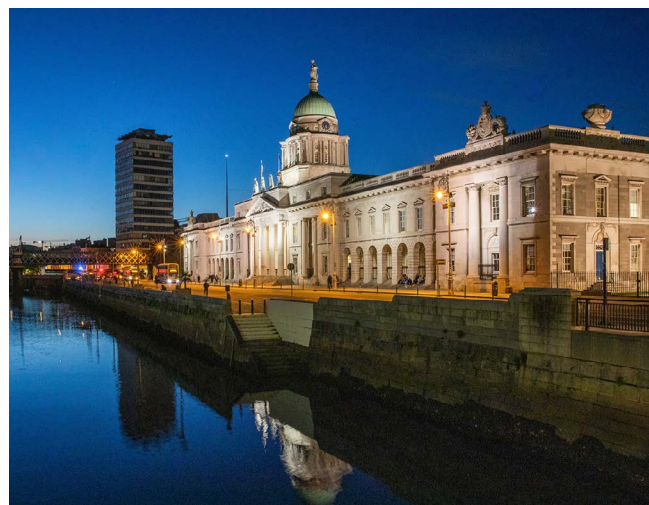
Biodiversity

The OPW Biodiversity Action Strategy 2022-2026, involves implementing biodiversity-friendly management measures at heritage sites, including pollinator-friendly grass management; maintaining diverse wild plant communities; sustainable trees management practices; bat friendly low lighting levels; mechanical weed control allowing minimal use of pesticides, chemicals and fertilizers; planting of native varieties, etc., at key locations.

Sustainability

Dart: Clontarf and Killester Dart stations are only 15 minutes walk away.

Dublin Bus Route(s): 14, 15, 27, 27A, 27B, 42, 43 and 123.



Opening Hours

All Year

Daily: 9.45 – 17.30pm

Last admission 16.45

Closed 24th December to 27th inclusive and 31st December to 1st January

Location

Custom House Quay, Dublin 1,
D01W6X0

An 18th century architectural masterpiece, in the heart of Dublin City.

Opened in November 2021, the Custom House Visitor Centre reveals the stories attached to the building, burning, and restoration of this iconic Dublin landmark. Designed by architect James Gandon, and opened in 1791, the Custom House has stood sentinel over the River Liffey for over 200 years.

The Custom House has witnessed much change over its long history, from the development of a city to many turbulent milestones that left their mark on the country – from the Act of Union to the War of Independence. Its build was met with fierce opposition, and its destruction by fire in 1921 demonstrates the controversies that surrounded Gandon's masterpiece.

The Custom House's architectural beauty and splendour still attracts to this day, and Edward Smyth's 14 River God keystones are just a few of the many detailed statues that adorn the building.

The Custom House Visitor Centre is a multi-sensory exhibition, with interactive screens, visual displays, and audio benches, to greatly enhance the visitor experience.

Highlights

- Stunning location along the River Liffey in Dublin's historic docklands.
- Insight into Dublin's famous Georgian architecture.
- New exhibition with audio-visual and artefacts.
- See the architectural beauty of Gandon's design: the atrium is a particular standout feature of the building.
- View, up close, the River God heads carved by Edward Smyth, representing the rivers of Ireland.
- See the original desk that Gandon used to design his first creation in Dublin.



Visitor Experiences

EXPERIENCE	DESCRIPTION	FITNESS LEVEL	MIN/MAX NUMBERS	DURATION (APPROX.)	PRICE PER PERSON
Guided Tours of Exhibition (Indoors)	Exhibition tour with an expert guide exploring the rich history of the Custom House and the milestone events happening within Ireland over the course of the building's 200 year history.	Mild. 6-7 steps to entrance. Lift/Stairs to upper level.	Min. 1 Max. 15	60 minutes Scheduled Times: 10.30am 12.30pm 14.30pm 16.00pm	€8.00 Adult €6.00 Senior €4.00 Child/Student €20.00 Family U12's Free
Self-guided Tour (Indoors)	Audio guides in a number of languages available at reception. Visitors can explore the exhibition at their own leisure, and enjoy the experience via our interactive screens and visual displays.	Mild. 6-7 steps to entrance. Lift/Stairs to upper level.	Min. N/A Max. 20	60 minutes	€6.00 Adult €5.00 Senior €3.00 Child/Student €15.00 Family U12's Free
River God Guided Tour (Outdoors)	Explore the history, mythology, and symbolism linked with Edward Smyth's 14 River God Heads adorning the outside of the Custom House.	Mild. 6-7 steps to entrance. Walking around perimeter of building for 60 mins.	Min. N/A Max. 15	60 minutes	€8.00 Adult €6.00 Senior €4.00 Child/Student €20.00 Family U12's Free

On-site Facilities

- Public paid coach and car parking nearby.
- Toilets/universal access toilet on site.
- Lift on site.
- Shops, cafés, restaurants within 5 minutes walk.

Booking Details

T: +353 (0)46 940 7146 **E:** customhousevc@opw.ie

Languages

Audio guides and visitor leaflets: English, Irish, Spanish, French, German, Italian, Mandarin, Ukrainian (Brazilian Portuguese to be added in 2023).

Parklands/Walks

Walk along the River Liffey Quays and through Docklands.

Tea Rooms

None.

Nearby

EPIC: The Irish Emigration Museum/Jeanie Johnston
Famine Ship, 2 min walk
Famine Memorial, 2 min walk
Dublin Castle, 15 min walk
Trinity College, 10 min walk

Biodiversity

Grounds around the back of building are managed for biodiversity, with wildflowers, a fountain, and pond.

The OPW Biodiversity Action Strategy 2022-2026, involves implementing biodiversity-friendly management measures at heritage sites, including pollinator-friendly grass management; maintaining diverse wild plant communities; sustainable trees management practices; bat friendly low lighting levels; mechanical weed control allowing minimal use of pesticides, chemicals and fertilizers; planting of native varieties, etc., at key locations.

Sustainability

Cycle paths along the Quays; Liffey boat trips available nearby.

In line with the OPW's Sustainability Strategy, we aim to reduce energy consumption and Green House Gas Emissions, avoid the generation of waste through life cycle thinking and reuse and recycling, commit to 'Green' procurement of goods and services, promote use of public transport, walking and cycling routes to access heritage sites.



Opening Hours

All year

(Closed: 25th, 26th & 27th December,
and 1st January)

Monday – Sunday & Bank Holidays:

9.45 – 17.45

Last admission 17.15

Location

Dame Street, Dublin 2, D02 AK81



Where Irish history has been made for over 1,000 years.

Once the centre of British rule in Ireland, from 1204 to 1922, Dublin Castle is now the setting for some of the Irish nation's most important state ceremonies. Come with us on a journey through time, from British rule to Irish independence and beyond.

Your journey begins underground, where a hidden excavation reveals the 10th century Viking foundations of Dublin.

In the Chapel Royal, the confidence of the British administration in Georgian times is captured through an astonishing array of plaster ornament and jewel-like glass. Experience aromas of old oak carvings, shafts of coloured light and musical melodies that abound during the concerts held here throughout the year.

The magnificent State Apartments, at the heart of the Castle, were once the inner sanctum of British royal power in Ireland. In an elegant throne room, and a vast ballroom, contrasting tales of feasting, famine, rebellion and revolution combine to tell you the story of Ireland's remarkable journey to independence from Britain in 1922.

The Record Tower (Medieval Tower) is due to open in 2024 and will be a stand-alone visitor experience, within the overall menu of tour options at Dublin Castle. It will tell the story of life within the Castle walls and medieval Dublin.

Highlights

- The grand hall where our head of State, the President of Ireland, is sworn into office.
- The most important painted ceiling by the Italian artist Vincenzo Waldré, to survive in Ireland from the eighteenth century is located in St Patrick's Hall.
- Tea Room serving delicious fare located on the ground floor which overlooks the Dubh Linn Gardens.
- Year round events calendar of outdoor theatre, talks, family events, music events.



Visitor Experiences

EXPERIENCE	DESCRIPTION	FITNESS LEVEL	MIN/MAX NUMBERS	DURATION (APPROX.)	PRICE PER PERSON
Guided Tour (Indoors & Outdoors)	Hear about the making of modern Ireland and see the grand hall where our head of State, the President of Ireland, is sworn into office. Enjoy engaging storytelling and experience vibrant exhibitions in the State Apartments Galleries. From excavation site of Viking and Mediaeval Dublin to the Gothic Chapel Royal and finally the splendour of the former Vice Regal Sate Apartments.	Mild. Universal access.	Min. 8 Max. 25	60 minutes	€12.00 Adult €10.00 Senior €7.50 Group €10.00 Student €6.00 Child €30.00 Family U12's Free
Self-guided Tour (Indoors & Outdoors)	Visitors can choose to self-guide (access to the State Apartments and Exhibitions only). Brochures in numerous languages available to ticket desk plus other information resources.	Mild. Universal access	Min. 8 Max. 25	30 minutes	€8.00 Adult €6.00 Senior/Group €6.00 Student €4.00 Child €20.00 Family U12's Free

On-site Facilities

- Exhibitions
- Toilets and wheelchair accessible toilets
- Gardens
- Paid parking on Werburgh Street, Dublin 2
- Paid coach parking on Castle Street, Dublin 2.

Booking Details

T: +353 (0)1 645 8813 **E:** dublincastle@opw.ie

This site is very busy, all groups whether guided or self-guided must pre-book.

Languages

Brochures available in Irish, English, French, German, Italian and Spanish.

Parklands/Walks

Dubh Linn Gardens in the grounds of the Castle provide time to relax and enjoy the location.

Tea Rooms

Tea Room serving delicious fare is located in the Chester Beatty which overlooks the Dubh Linn Gardens.

Nearby

In the castle grounds, explore the Coach House Gallery, Dubh Linn Gardens and Chester Beatty Museum.

Located in Dublin city centre and walking distance to Temple Bar, Christchurch Cathedral, Trinity College, Guinness Storehouse. Accessible by car or public transport are Kilmainham Gaol, Royal Hospital Kilmainham, |Farmleigh House.

Biodiversity

The OPW Biodiversity Action Strategy 2022-2026, involves implementing biodiversity-friendly management measures at heritage sites, including pollinator-friendly grass management; maintaining diverse wild plant communities; sustainable trees management practices; bat friendly low lighting levels; mechanical weed control allowing minimal use of pesticides, chemicals and fertilizers; planting of native varieties, etc., at key locations.

Sustainability

In line with the OPW's Sustainability Strategy, we aim to reduce energy consumption and Green House Gas Emissions, avoid the generation of waste through life cycle thinking and reuse and recycling, commit to 'Green' procurement of goods and services, promote use of public transport, walking and cycling routes to access heritage sites.

Accessibility

Cobbled and paved exterior areas. Please note that only the State Apartments are wheelchair accessible.



Opening Hours

16th March to 31st December
(Closed: 25th, 26th & 27th December)

Daily: 10.00 – 18.00

Last tour 16.30

Last entry to the estate 17.00

Location

Farmleigh House and Estate,
Phoenix Park, Dublin, D15 TD50

An eclectic Edwardian mansion and the Irish State guesthouse.

A historic house holding important collections, an art gallery, a working farm, and the official Irish State guesthouse, Farmleigh House and Estate, is located in an estate of seventy-eight acres situated to the north-west of Dublin's Phoenix Park.

Farmleigh provides accommodation for visiting dignitaries and guests of the nation, most notably: Queen Elizabeth II in 2011, Emperor of Japan in 2005, and Prince William and the Duchess of Cambridge in 2019. It is also used for state receptions, hosting many dignitaries such as former US President Barack Obama and former US Vice-President Mike Pence.

Previously owned by the famous Guinness brewing family, Farmleigh remains a unique representation of its heyday, the Edwardian period, and houses important artworks and furnishings, as well as the Benjamin Iveagh collection of rare books, bindings, and manuscripts, which are held in the Library.

The extensive pleasure grounds feature walled and sunken gardens, and scenic lakeside walks.

Highlights

- Exquisite interiors with hidden doorways, ornate furnishings, unique library and beautiful ballroom.
- Contemporary sculptures by renowned Irish and international artists located throughout the grounds.
- Realising gardens and working walled garden with glasshouses and vinery.

Visitor Experiences

EXPERIENCE	DESCRIPTION	FITNESS LEVEL	MIN/MAX NUMBERS	DURATION (APPROX.)	PRICE PER PERSON
Guided Tour (Indoors)	Join one of our knowledgeable guides for a tour of Farmleigh House that takes you from the eighteenth century, when the building commenced, right up to the present day.	Mild. Universal access.	Min. 1 Max. 25	45-50 minutes	€8.00 Adult €6.00 Senior/Group €4.00 Child/Student €20.00 Family U12's Free
Guided Tour (Outdoors)	Includes the extensive pleasure grounds with a wonderful collection of Victorian, Edwardian and contemporary ornamental features with walled and sunken gardens and scenic lakeside views. Hear the fascinating stories of various members of the Guinness family who lived in the house, and helped create Farmleigh's beautiful pleasure grounds.	Mild. Universal access on mixed surfaces of paving, gravel, grass.	Min. 1 Max. 25	45-50 minutes	€5.00 Adult €4.00 Senior/Group €3.00 Child/Student €13.00 Family U12's Free

On-site Facilities

- Large free car, coach, and motorcycle parking on site. Five minute walk from the car park to the house.
- Toilets, universal access toilets, baby changing and ticket/information desk.
- Seven minute walk from the car park to the Gallery, Gardens and Boathouse Restaurant.

Booking Details

T: +353 (0)46 943551 **E:** farmleighguides@opw.ie

Group bookings must be made in advance. Please note due to the nature of the site, Farmleigh Estate may close at short notice due to government business and this is out of control of staff. If this occurs a member of staff will notify you ASAP to arrange cancellation/rescheduling if possible.

Languages

English leaflet and guide book.

Parklands/Walks

N/A

Tea Rooms

The Boathouse Restaurant by Brambles. Open seven days a week, all year round from 10am to 5.30pm.

The Boathouse Restaurant, with its deck overlooking the ornamental lake at Farmleigh, allows you to enjoy a wonderful setting in a landscape unchanged since the 19th century.

T: +353 (0)1 815 7255

Nearby

Dublin Zoo, Phoenix Park Visitor Centre and Walled Victorian Gardens, Kilmainham Gaol Museum Visitor Centre, Royal Hospital Kilmainham – Irish Museum of Modern Art, Guinness Storehouse.

Biodiversity

The OPW Biodiversity Action Strategy 2022-2026, involves implementing biodiversity-friendly management measures at heritage sites, including pollinator-friendly grass management; maintaining diverse wild plant communities; sustainable trees management practices; bat friendly low lighting levels; mechanical weed control allowing minimal use of pesticides, chemicals and fertilizers; planting of native varieties, etc., at key locations.

Sustainability

In line with the OPW's Sustainability Strategy, we aim to reduce energy consumption and Green House Gas Emissions, avoid the generation of waste through life cycle thinking and reuse and recycling, commit to 'Green' procurement of goods and services, promote use of public transport, walking and cycling routes to access heritage sites.

Accessibility

We are committed to making Farmleigh Estate as accessible as possible. The ground floor of Farmleigh House is fully accessible to wheelchair users. Signs throughout the grounds use Braille.

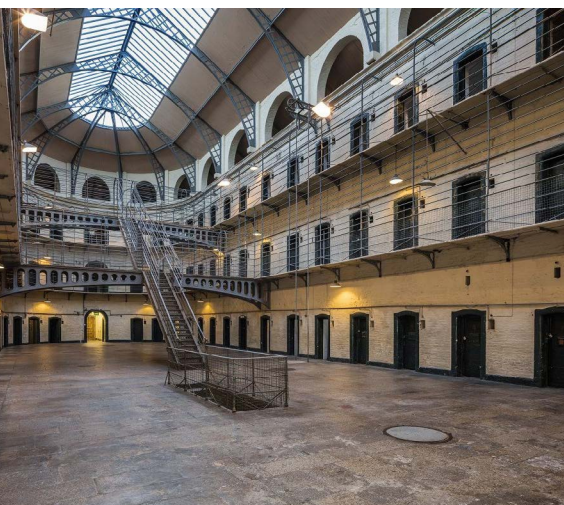


Heritage Ireland
OPW



Kilmainham Gaol Museum

Co Dublin



Opening Hours

1st April to 31 May 2023

Daily: 9.00 – 18.00

1st June to 31 August 2023

Daily: 9.00 – 18.30

1st to 30th September 2023

Daily: 9.00 – 18.00

1st October to 31st March 2024

Daily: 9.30 – 17.30

Location

Inchicore Road, Dublin, D08 RK28

A monument to more than a century of Irish Nationalism.

Kilmainham Gaol is one of the largest unoccupied prisons in Europe. It opened in 1796 as the new county gaol for Dublin and finally closed as a prison in 1924. During its long history Kilmainham Gaol witnessed some of the most heroic and tragic events in Ireland's emergence as a modern nation.

Among those detained – and in some cases executed here – were leaders of the rebellions of 1798, 1803, 1848, 1867 and 1916, as well as members of the Irish republican movement during the War of Independence and Civil War.

Not to be forgotten however, are the thousands of men, women and children that Kilmainham held in its capacity as a county gaol. Their crimes ranged from petty offences such as stealing food during the Famine to the more serious crime of murder.

The guided tour through the corridors and cells of the prison follows the story of Kilmainham as a county gaol and convict depot throughout the 19th century, while also illustrating the part the prison played in Ireland's struggle for independence.

Highlights

- Walk in the footsteps of Ireland's most famous patriots and see where the leaders of the 1916 Easter Rising were executed.
- Experience what life was like for the common criminals held in the prison.
- Explore the cells in the Victorian Wing of the Gaol, which has been used as a location for many movies and television shows.
- Access to the museum with extensive exhibitions detailing the history of the prison from its opening in 1796 to its restoration in the 1960s.

Visitor Experiences

EXPERIENCE	DESCRIPTION	FITNESS LEVEL	MIN/MAX NUMBERS	DURATION (APPROX.)	PRICE PER PERSON
Guided Tour (Indoors & Outdoors)	Access to the Gaol is by guided tour only. The tour begins with a short audio-visual presentation in the prison chapel and then takes you through the empty corridors and cells of the Georgian and Victorian wings of the prison, where you will hear stories of despair, defiance and inspiration. The tour concludes in the Stonebreaker's Yard, where 14 leaders of the 1916 Easter Rising were executed.	Moderate. Uneven surfaces with stairs. Not fully wheelchair accessible* <i>*Please contact site in advance if there are mobility issues.</i>	Min. 10 Max. 35	60 minutes	€8.00 Adult €6.00 Senior/Group €4.00 Student €20.00 Family U12's Free
Self-guided Tour Kilmainham Gaol Museum (Indoors)	Explore the museum at your leisure. Interactive exhibitions over three floors includes original artefacts from the Gaol's history. The museum has one of the few remaining original copies of the 1916 Proclamation of the Irish Republic.	Mild. Lift available to all levels. Wheelchair accessible.	Min. 10 Max. 35	30 minutes	As part of the admission fee
Self-guided Tour Kilmainham Courthouse Visitor Centre (Indoors)	Self-guided visited of the Courthouse. Historical information and items on display throughout the building. In operation from 1820 to 200, today it functions as the visitor centre for Kilmainham Gaol. The courthouse has retained its internal courtroom and historical information and artefacts are displayed throughout the building.	Mild. Lift available. Wheelchair accessible.	Min. 10 Max. 35	30 minutes	As part of the admission fee

On-site Facilities

- Two paid parking spaces for coaches at entrance to site.
- Additional parking available in the Royal Hospital Kilmainham (located 110m from Kilmainham Gaol)
- Café located in the Courthouse Visitor Centre.
- Toilets, wheelchair accessible toilets, baby changing facilities.

Booking Details

Group bookings (min 10 – max 35)

T: +353 (0)1 453 5984 **E:** kilmainhamgaol@opw.ie

Independent travellers: online booking available 28 days in advance www.kilmainhamgaolmuseum.ie

Languages

Leaflets in Irish, English, French, German, Italian and Spanish are available to download from the website:
<http://kilmainhamgaolmuseum.ie/plan-a-visit/>

Parklands/Walks

N/A

Tea Rooms

Brambles Café located in the Courthouse Visitor Centre.
T: +353 (0)1 468 5000

Nearby

Royal Hospital Kilmainham, 110m
Phoenix Park, 1.6km
The Irish National War Memorial Gardens, 850m
Richmond Barracks, 1.3km

Biodiversity

The OPW Biodiversity Action Strategy 2022-2026, involves implementing biodiversity-friendly management measures at heritage sites, including pollinator-friendly grass management; maintaining diverse wild plant communities; sustainable trees management practices; bat friendly low lighting levels; mechanical weed control allowing minimal use of pesticides, chemicals and fertilizers; planting of native varieties, etc., at key locations.

Sustainability

Dublin bike station available outside the front entrance, served by public transport.

Dublin Bus Route(s): No. 13 from O'Connell Street or College Green, No. 60 from Wellington Quay or Heuston Station, G1/G2 from Spencer Dock or Wellington Quay. Please see www.dublinbus.ie for further information.

LUAS Tram: Red Line: Nearest stop Suir Road. Please see www.luas.ie for further information.



Opening Hours

March to October

Mon-Fri: 10.00 – 17.00

Sat-Sun: 10.00 – 18.00

November – February

Mon – Fri: 9.00 – 16.30

Sat & Sun: 10.00 – 16.00

Location

Botanic Road, Glasnevin, Dublin 9,
D09 VY63

A Victorian garden with a 21st century approach to design and conservation.

The National Botanic Gardens is Ireland's premier garden. Based in leafy Glasnevin, yet surprisingly only a stone's throw from Dublin's city centre, it is a green oasis for the people of Dublin. Extending over almost fifty acres, the gardens provide a fantastic amenity for visitors to view an amazing range of plants from all over the world and covering every habitat imaginable, from arid deserts and tropical rainforests to snowy mountain tops. It has an extensive range of Victorian glasshouses including Turner's world famous Curvilinear Range and the Great Palm House. It is also home to the National Herbarium and the National Botanical Art Collection.

Throughout the gardens and glasshouses, there are over 17,000 plant species, which is one of the most diverse plant collections internationally and recognised as being in the top ten of botanic gardens worldwide. The gardens boasts many features including the organic vegetable garden, rose garden, arboretum, double-sided herbaceous borders and a stunning plant collection.

Visiting the gardens is always a pleasure and each season has its treasures; late spring and early summer brings the magnificent Handkerchief tree, *Davidia involucrata*, the winding wisterias on the chain tent and the Chinese Strawberry tree, *Cornus capitata* in full bloom, not to mention the emergence of hundreds of other wonderful herbaceous plants including the iris and peony collections.

Highlights

- Richard Turner's Curvilinear Range, including the Great Palm House.
- Rose garden, organic vegetable garden.
- Herbaceous borders.
- Arboretum and rockery.
- Landscaped ponds/water garden.



Visitor Experiences

EXPERIENCE	DESCRIPTION	FITNESS LEVEL	MIN/MAX NUMBERS	DURATION (APPROX.)	PRICE PER PERSON
Guided Tour – Seasonal (Outdoors)	Join one of our trained horticultural garden guides to discover the stories behind the historic glasshouses and wonderful plant collections. Discover some quirky plant facts while exploring the gardens. Listen to the fascinating history and international significance of the National Botanic Gardens.	Moderate. Gravel, paved and grass paths.	Min. 6 Max. 20	60 minutes	€5.00 Group
Guided Tour Wild Ireland – Meet the Native Trees and Plants (Outdoors)	With an experiences guide, take a walk through wild Ireland, our extensive native plant collection and learn about our native collection of plants, from folklore to the role that they play in biodiversity and the Irish landscape.	Moderate. Gravel, paved and grass paths	Min. 6 Max. 20	60 minutes	€5.00 Group
Family-friendly Guided Tour (Outdoors)	Unravel some of the fun secrets behind the wonderful mysterious world of plants. Discover the rare iconic, and quirkiest plants in our collection. Find out the tallest and smallest plants, ones that are smelly in a good and bad way and why! View insect-eating plants and ones that pretend to be insects. Informal and fun!	Moderate. Gravel, paved and grass paths.	Min. 6 Max. 20	60 minutes	€5.00 Group
Guided Tour – Exploring Biophilia in the Botanic Gardens (Outdoors)	It is believed that humans have evolved to have an instinctive bond with nature, one which our increasingly urbanised life threatens to disrupt. During this tour you will learn about the effect that plants have on our physical and mental states as well as the social benefits this exposure brings to us.	Moderate. Gravel, paved and grass paths.	Min. 6 Max. 20	60 minutes	€5.00 Group
Guided Tour – Ireland's National Herbarium (Indoors)	Join in an interesting tour of the herbarium and economic botany collection with our expert guides.	Moderate. Gravel, paved and grass paths.	Min. 6 Max. 20	60 minutes	€5.00 Group

On-site Facilities

- Visitor centre, gallery and Tea Rooms.
- Car park (charges apply).
- Toilets, universal access toilets,
- Baby changing facilities.
- Small book shop.
- Walking trails and self-guided trails for families.

Booking Details

T: +353 (0)1 804 0319 or +353 (0)1 857 0909

E: botanicgardens@opw.ie

Languages

Free brochures available in Irish and English.

Parklands/Walks

The Pearse Museum is located in 50 acres of landscaped parkland with a lake, river, walks and a walled garden.

Tea Rooms

Large Tea Room on site with a seating capacity for 100.

For group bookings **E:** botanicgardens@opw.ie



Heritage Ireland
OPW



National Botanic Gardens
Co Dublin

Nearby

Casino Marino, Dublin Castle, Glasnevin Cemetery and Museum, Croke Park Museum and Highline, Phoenix Park.

Biodiversity

The National Botanic Gardens is a green lung in the city with a wide variety of bird life, insects and an amazing collection of both native plants and plants from all around the world. The bee borders and organic vegetable gardens are usually alive with bees from our bee hives.

Sustainability

In an urban setting with easy access to local bus services.

In line with the OPW's Sustainability Strategy, we aim to reduce energy consumption and Green House Gas Emissions, avoid the generation of waste through life cycle thinking and reuse and recycling, commit to 'Green' procurement of goods and services, promote use of public transport, walking and cycling routes to access heritage sites.



Museum Opening Hours

November to January (inclusive)

Daily: 9.30 – 16.00

February

Daily: 9.30 – 17.00

March to October (inclusive)

Daily: 9.30 – 17.30

Park Opening Hours

November to January (inclusive)

Daily: 9.00 – 16.30

February

Daily: 9.00 – 17.30

March and October

Daily: 9.00 – 18.00

April and September

Daily: 9.00 – 20.00

May to August

Daily: 9.00 – 21.00

Location

The Pearse Museum,
St Enda's Park, Grange Road,
Rathfarnham, D16 Y7Y5

8km south of Dublin City Centre

Former home and school of Patrick Pearse, leader of the 1916 Rising

The Pearse Museum is located in the former home and school of Patrick Pearse. Pearse was the leader of the 1916 Rising, and he, and his brother, William, were among those executed for their part in the rebellion. The Pearse Museum tells the story of their role in that dramatic event, as well as Pearse's work as a writer, teacher and Irish language campaigner.

The museum exhibition tells the story of Pearse's life. Visitors can stroll around historic rooms, including Pearse's study where he did much of his writing, a school dormitory, study hall and chapel. The school art gallery contains original artworks by Beatrice Elvery, Patrick Tuohy and Jack B. Yeats. A separate gallery is devoted to the sculptural work of Pearse's brother William. The courtyard at the rear of the museum houses a recreation of an original school classroom as well as a Nature Room where visitors can learn about Ireland's flora and fauna.

Highlights

- Exhibition on Pearse's life which includes unique items such as the handwritten manuscript of his famous O'Donovan Rossa speech.
- Historic rooms including Pearse's study, a school dormitory, the Study Hall and Chapel.
- Important collection of unique objects relating to Pearse and the Pearse family, original artworks and a gallery devoted to the sculptural work of Pearse's brother William.
- Fifty acres of landscaped parkland and a Nature Room explaining Ireland's flora and fauna.
- Contemporary tearoom with attractive courtyard seating area.

Visitor Experiences

EXPERIENCE	DESCRIPTION	FITNESS LEVEL	MIN/MAX NUMBERS	DURATION (APPROX.)	PRICE PER PERSON
Guided Tour	Visitors will hear the story of Patrick Pearse and his brother William, both of whom were executed for their part in the 1916 Rising. Visitors will also hear about Scoil Éanna, Patrick Pearse's innovative school which offered his pupils a wide and varied curriculum in a building filled with beautiful artworks and historic artefacts.	Moderate. Steps, passenger lift to most areas, some seating throughout the building.	Min. 8 Max. 30	60 minutes	Free admission
Self-guided Tour	Visitors may explore the museum themselves with the aid of information booklets distributed throughout the building. Our guiding staff are happy to provide brief historical introductions to self-guiding visitors.	Moderate. Steps, passenger lift to most areas, some seating throughout the building.	Min. 1 Max. 30	30 minutes	Free admission

On-site Facilities

- Free car parking at main car park at Sarah Curran Avenue (44 places) and Taylor's Lane car park (14 places).
- No designated bus parking spaces, but car park at Sarah Curran Avenue is accessible by coaches.
- Disabled parking at museum (2) and main carpark (3). Walking distance: 800m from main car park and 400m from Taylor's Lane.
- Toilets, universal access toilets, tearooms, baby changing facilities.

Booking Details

T: +353 (0)1 493 4208 **E:** pearsemuseum@opw.ie

Languages

Free brochures available in Irish and English.

Parklands/Walks

The Pearse Museum is located in 50 acres of landscaped parkland with a lake, river, walks and a walled garden.

Tea Rooms

The Schoolhouse Café seats 33-35 people indoors, and up to 25 people outdoors.

T: +353 (0)1 493 4208

Nearby

Rathfarnham Castle, 1.9km
Marlay Park and House, 1.3km
Airfield House, Farm and Gardens, 4.7km
Dodder Valley Park, 3.6km

Biodiversity

Ecologically valuable habitats in St Enda's Park include the Walled Garden, broad-leaved woodlands, parkland, a lake, stream, arboretum and mature trees. The habitats in the park are home to a number of protected species including birds such as Sparrowhawk, Buzzard, Kingfisher and Dipper, insects such as bumblebees, honey bees and *Bombus Vestalis*, solitary bees, hover flies, beetles and bats which roost in the eaves of the Nature Room.

Sustainability

Recycling, drinking water available in tearoom, eco-friendly management of park and gardens. In an urban location served by public transport.

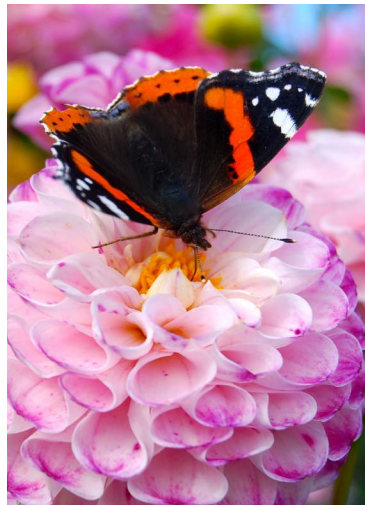


Heritage Ireland
OPW



Biodiversity Centre, Knockmaroon, Phoenix Park

Co Dublin



Opening Hours

March 22nd to December 31st 2023

Wed - Sun: 9.30 – 17.50

Location

Biodiversity Centre, Knockmaroon,
Phoenix Park, Dublin, D20 A402

A biodiversity haven located in the western corner of the Phoenix Park, home to a wide variety of flora (plants) and fauna (animals).

Biodiversity Centre, Knockmaroon, located on the western side of the Phoenix Park beside the Knockmaroon Gate Lodge. This area is one of the most tranquil parts of the park.

The Biodiversity Centre is located beside the Glen Pond a diverse wetland habitat. This area of the park known as the Furry Glen is a haven for Biodiversity. It has areas of woodland and wildflowers providing both food and shelter to the variety of species found in the park.

Highlights

- Wide range of both flora and fauna can be found in the Furry Glen and pond.
- Mature specimen tree species both native and non-native can be viewed.
- Diversity of bird species can be spotted both in the woodland and pond areas.

Visitor Experiences

EXPERIENCE	DESCRIPTION	FITNESS LEVEL	MIN/MAX NUMBERS	DURATION (APPROX.)	PRICE PER PERSON
Guided Tour (Outdoors)	<p>A guided biodiversity tour covers the history of the park and looks at a wide range of flora and fauna both native and non-native that can be found in this area of the park known as the Furry Glen.</p> <p>The guide will demonstrate easy and simple identification features to help identify these different species of flora and fauna. Followed by unlimited time to explore the Furry Glen and pond at your own leisure.</p>	<p>Moderate.</p> <p>Glen walks feature a mix of tarmac, gravel and grass paths with slopes, steps and exposed water.</p>	<p>Min. 1</p> <p>Max. 30</p>	50 minutes	Free admission
Self-guided Garden Tour (Outdoors)	<p>Explore the Furry Glen at your own leisure and take in the picturesque Glen Pond and the bird song that is abundant.</p>	<p>Moderate.</p> <p>No restrictions</p>	<p>Min. N/A</p> <p>Max. N/A</p>	30-90 minutes	Free admission

On-site Facilities

- Car parking
- Toilets.

Booking Details

T:+353 (0)46 942 2190

E: phoenixparkvisitorcentre@opw.ie

Languages

N/A

Parklands/Walks

N/A

Tea Rooms

N/A

Nearby

Phoenix Park Visitor Centre and Farmleigh House.

Biodiversity

The OPW Biodiversity Action Strategy 2022-2026, involves implementing biodiversity-friendly management measures at heritage sites, including pollinator-friendly grass management; maintaining diverse wild plant communities; sustainable trees management practices; bat friendly low lighting levels; mechanical weed control allowing minimal use of pesticides, chemicals and fertilizers; planting of native varieties, etc., at key locations.

Sustainability

In line with the OPW's Sustainability Strategy, we aim to reduce energy consumption and Green House Gas Emissions, avoid the generation of waste through life cycle thinking and reuse and recycling, commit to 'Green' procurement of goods and services, promote use of public transport, walking and cycling routes to access heritage sites.

Accessibility

The Furry Glen Walks feature a mix of tarmac, gravel and grass paths with slopes, steps and exposed water.



Opening Hours

May to October (inclusive)

Daily: 9.30 – 17.30

Last admissions 16.45

November to April (inclusive)

**Wednesday to Sunday
and Bank Holiday Mondays:**

10.30 – 17.00

Last admissions 16.15

Location

Rathfarnham Castle, Rathfarnham,
Dublin 14, D14 K3T6

Stunning 400-year-old castle remodelled in the eighteenth century.

This Elizabethan period fortified house was commissioned in 1583 by the Archbishop-Chancellor of Ireland, Adam Loftus (d.1605), as his private residence. The design was radically modern for the time and the building combined defensive features such as the four angled corner towers and a series of gun loops, with the comfort and status demanded by the owner.

Extensive remodelling and redecoration took place in the 18th century under a series of later owners. Perhaps most notable are the works commissioned by Henry Loftus (d.1783) by such famous architects and designers as Sir William Chambers and James 'Athenian' Stuart. Much of the neo-classical design and decoration which characterises the building today can be attributed to their efforts.

Since coming into State care in the 1980s much of the building has been restored to its Georgian splendour and today it features a collection of original fine art, including family portraits by Peter Lely, Angelica Kauffman and Hugh Douglas Hamilton together with some period furniture. Contemporary art exhibitions are held at the Castle throughout the year as well as a busy cultural programme of concerts, theatre, talks, lectures and other events.

Highlights

- One of Ireland's first fortified houses, radically modern when built in 1583.
- Georgian interiors to the designs of Sir William Chambers and James 'Athenian' Stuart.
- Collection of family portraits, landscape paintings and period furniture.
- Tea rooms, park and playground on site.

Visitor Experiences

EXPERIENCE	DESCRIPTION	FITNESS LEVEL	MIN/MAX NUMBERS	DURATION (APPROX.)	PRICE PER PERSON
Guided Tour (Indoors)	Guided tour with insight into the castle's history, its owners and former residents including commentary on its architectural features and collection of paintings and period furniture	Mild. Lift to all floors, some seating available.	Min. 8 Max. 30	60 minutes	€5.00 Adult €4.00 Senior/Group €3.00 Student €13.00 Family U12s Free
Self-guided Tour	Visitors may explore the castle themselves with the aid of information boards distributed throughout the building. Our guides are happy to provide brief 5-minute historical introductions to self-guiding visitors should they wish for greater background and context before beginning their tour	Mild. Lift to all floors, some seating available.	Min. 1 Max. 30	30-60 minutes	€5.00 Adult €4.00 Senior/Group €3.00 Student €13.00 Family U12s Free

On-site Facilities

- Pay and display car park operated by South Dublin County Council (40 spaces & 2 disabled parking spaces).
- Two free coach parking spaces.
- Toilets, universal access toilets, passenger lift, café, baby changing facilities.

Booking Details

T: +353 (0)1 493 9462 **E:** rathfarnhamcastle@opw.ie

Languages

Guidebook and information leaflet available in English.

Parklands/Walks

Rathfarnham Castle park is surrounded by parkland owned and managed by South Dublin County Council. As well as woods, walks and a small lake, there is a children's playground.

Tea Rooms

Stuart and Chambers Tearooms located in what was once the castle's Georgian kitchen wing. Seating capacity: 50.

T: +353 (0)46 940 7329 www.brambles.ie

Nearby

The Pearse Museum and St Enda's Park, 1.7km
The Iveagh Gardens, 4.4km
Airfield Estate, 4.2 km
Marlay Park, 3km
St Stephen's Green, 4.8km

Biodiversity

Pollinator planting in the courtyard planters maintained by OPW gardening staff. The South Dublin County Council managed parkland has a Green Flag recognizing its value as a high quality green space.

Sustainability

Drinking water fountain available in the park for refilling bottles. OPW, Rathfarnham Castle and Brambles' tearooms operators recycle waste where possible. Urban location served by local bus services.