



Ireland's Hidden
HEARTLANDS



Doneraile Court and Estate

Heritage Sites of Ireland Trade Catalogue 2023

Ireland's Hidden Heartlands



Heritage Ireland
OPW



Group Trade Information

1. Groups and trade ... explore more

Bring your group to visit an historic place for a great day out.

- If you are a public group or in the travel trade and have customers for group travel, FIT or MICE our staff are delighted to present memorable experiences at over 70 historic attractions.*
- Our guides excel in customer service and storytelling that enthralls and engrosses the visitor, while offering a unique insight into the extraordinary legacy of Ireland's iconic heritage.
- Join our mailing list for more information on www.heritageireland.ie
- Contact each site directly for booking – details in Groups/Trade Catalogue

2 Group Visit Benefits

- Group Rate – up to 20% off** normal adult admission rate (min. 10 at most sites)
- One free tour leader per group booking
- Free once-off familiarisation visit
- Ability to amend/cancel bookings free of charge
- Coach parking at many of our sites
- Use of tour groups own wireless transmission whisper system allowed. (This does not include open audio loudspeakers.)
- Some of our sites have their own guided wireless transmission system/audio guide provided free of charge.
- Fast track admission for pre-booked groups
- Exclusive guided tours (some sites have specific language guided tours)
- Specific language audio-visual films in some sites for pre-booked tours
- Access to OPW Tour Operator Voucher Scheme (TOVS). Payment by monthly invoice. Email us at toursopsaccounts@opw.ie

*2023 rates will change in 2024.

2024-2027 rates will be made available on heritageireland.ie

Children under 12 visit free but must be accompanied by an adult.

**2023 opening dates are listed as of 20/01/23 please check with sites directly for exact opening dates.

3 Plan Your Itinerary

- For inspiration about passage tombs, historic castles, Christian sites and historic houses and gardens throughout Ireland.
- From brunch to banquets – facilities at sites, varied events, exhibitions and so much more.
 - Wild Atlantic Way
 - Ireland's Ancient East
 - Dublin
 - Ireland's Hidden Heartlands

4 Tour Operators Voucher Scheme – contact us

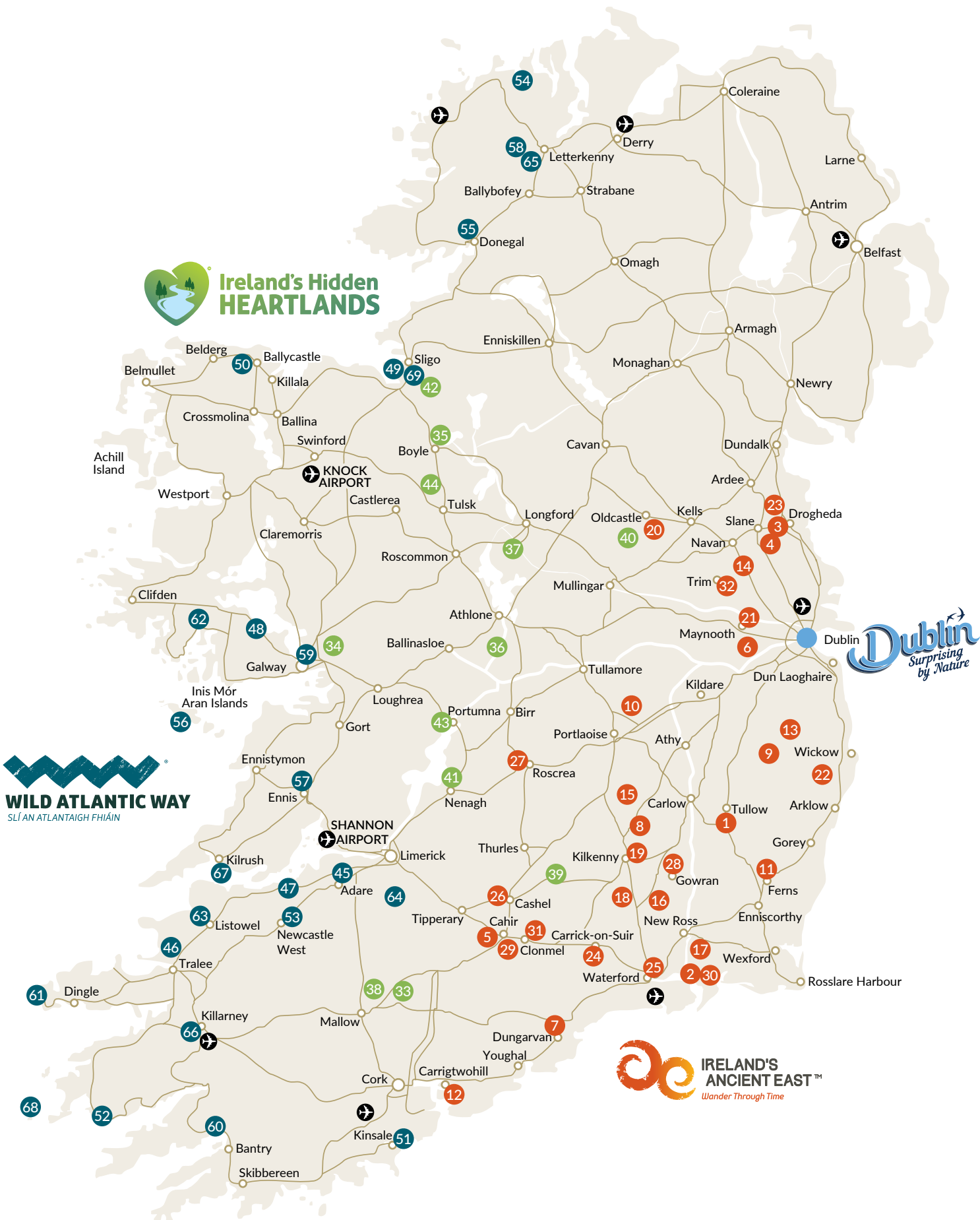
- Visitor Services, Office of Public Works, 20 Lakeside Retail Park, Ballindine Road, Clarendon, Co Mayo, F12 DK30, Ireland.
T: +353 (0)1 647 6000
E: toursopsaccounts@opw.ie
- Join our mailing list for more information on www.heritageireland.ie



Heritage Ireland
OPW

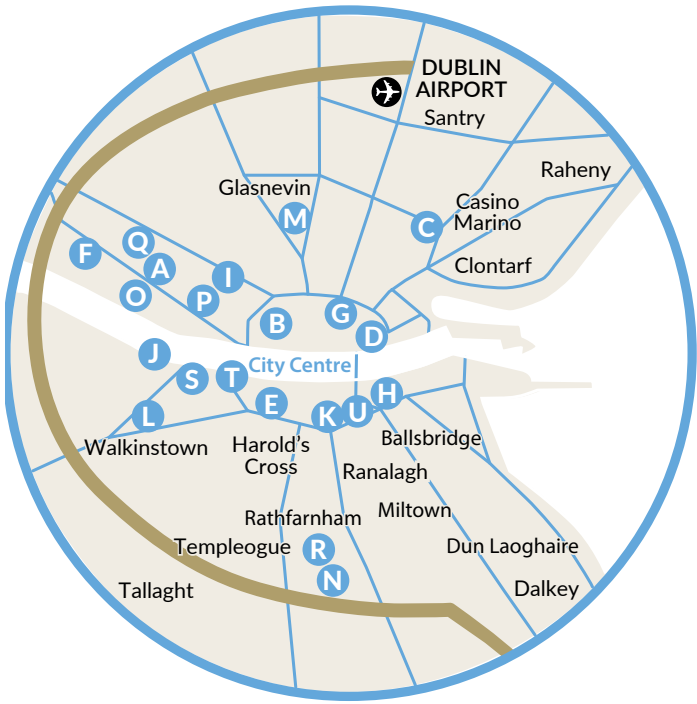
Heritage Services

Ireland's Iconic Heritage Sites



Dublin

- A Áras an Uachtaráin
- B Arbour Hill Cemetery
- C Casino Marino
- D Custom House Visitor Centre
- E Dublin Castle
- F Farmleigh House and Estate
- G Garden of Remembrance
- H Government Buildings
- I Grangegorman Military Cemetery
- J Irish National War Memorial Gardens
- K Iveagh Gardens
- L Kilmainham Gaol
- M National Botanic Gardens
- N Pearse Museum – St Enda's Park
- O Phoenix Park
- P Phoenix Park – People's Flower Gardens
- Q Phoenix Park Visitor Centre – Ashtown Castle
- R Rathfarnham Castle
- S Royal Hospital Kilmainham
- T St Audeon's Church
- U St Stephen's Green



Ireland's Hidden Heartlands

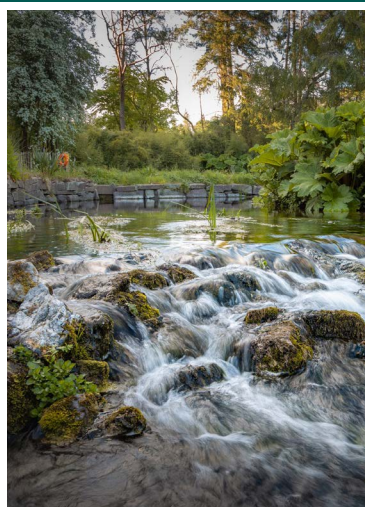
- 33 Anne's Grove
- 34 Athenry Castle
- 35 Boyle Abbey
- 36 Clonmacnoise
- 37 Corlea Trackway Visitor Centre
- 38 Doneraile Court and Wildlife Park
- 39 Famine Warehouse 1848
- 40 Fore Abbey
- 41 Nenagh Castle
- 42 Parke's Castle
- 43 Portumna Castle and Gardens
- 44 Rathcrogan Visitor Centre

Ireland's Ancient East

- 1 Altamont Gardens
- 2 Ballyhack Castle
- 3 Battle of the Boyne - Oldbridge Estate
- 4 Brú na Bóinne Visitor Centre
- 5 Cahir Castle
- 6 Castletown House and Parklands
- 7 Dungarvan Castle
- 8 Dunmore Caves
- 9 Dwyer Mc Alister Cottage
- 10 Emo Court and Gardens
- 11 Ferns Castle
- 12 Fota Arboretum and Gardens
- 13 Glendalough Visitor Centre
- 14 Hill of Tara
- 15 Heywood Gardens
- 16 Jerpoint Abbey
- 17 JFK Arboretum
- 18 Kells Priory
- 19 Kilkenny Castle
- 20 Loughcrew
- 21 Maynooth Castle
- 22 National Botanic Gardens – Kilmacurragh
- 23 Old Mellifont Abbey
- 24 Ormond Castle
- 25 Reginald's Tower
- 26 Rock of Cashel
- 27 Roscrea Heritage (Castle and Damer House)
- 28 St Mary's Church Gowran
- 29 Swiss Cottage
- 30 Tintern Abbey
- 31 The Main Guard
- 32 Trim Castle

Wild Atlantic Way

- 45 Adare Castle
- 46 Ardfert Castle
- 47 Askeaton Castle
- 48 Aughnacore Castle
- 49 Carrowmore Megalithic Cemetery
- 50 Céide Fields
- 51 Charles Fort
- 52 Derrynane House and Gardens
- 53 Desmond Castle Newcastle West
- 54 Doe Castle
- 55 Donegal Castle
- 56 Dún Aonghasa
- 57 Ennis Friary
- 58 Glebe House and Gallery
- 59 Hall of the Red Earl
- 60 Inlacullin (Garinish Island)
- 61 Ionad an Blascaoid
- 62 Ionad Cultúrtha an Phiarsaigh, Connemara – Pearse's Cottage
- 63 Listowel Castle
- 64 Lough Gur
- 65 Newmills Corn and Flaxmills
- 66 Ross Castle
- 67 Scatterry Island
- 68 Skelligs
- 69 Sligo Abbey



Opening Hours

31st March to 25th September

Thursday – Monday: 10.00 – 16.00

Location

Castletownroche, Co Cork,
P51 HR74

A horticultural riverside gem and inspiration for poets and artists.

Annes Grove is an historic estate located near Castletownroche Co Cork. It was the home of the Annesley family from the 1600s until 2015 when it was gifted to the Irish state and entered the care of the Office of Public Works.

Richard Arthur Grove Annesley, inherited Annes Grove in 1892 and developed the landscape in the Robinsonian style in the early 1900s. He supported the plant-hunting expeditions led by Frank Kingdon-Ward to Tibet, Yunnan Province, Burma and Bhutan and assembled an exotic collection of plants. Some of the spectacular flowering shrubs dating from this period include *Cornus cousa*, *embothrium*, *eucryphia* and *hoheria*.

Period buildings and features on the site include the Bleaching Yard, Coach House, North Stables Carriage Display, Dairy Yard, Walled Garden and are all fully wheelchair accessible.

Highlights

- Horticultural gem set on the banks of the River Awbeg.
- Stunning collection of specimen plants from all over the world.
- Experience an oasis of nature and beauty on the picturesque banks of the River Awbeg, said to be the inspiration for Edmund Spenser's *Faerie Queene*.



Visitor Experiences

EXPERIENCE	DESCRIPTION	FITNESS LEVEL	MIN/MAX NUMBERS	DURATION (APPROX.)	PRICE PER PERSON
Guided Tour (Outdoors)	A garden guided tour takes in the history of the house and gardens, the Grove Annesley family and the story of the plant hunting expeditions of the early 20th century. Followed by unlimited time to explore the gardens at your own leisure.	Moderate. Garden walks feature a mix of gravel and grass paths with slopes, steps and exposed water.	Min. 8 Max. 50	50 minutes	€5.00 Entry includes guided tour
Self-guided Garden Tour (Outdoors)	Explore Annes Grove Gardens at your own leisure	Moderate. As above	Min. N/A Max. N/A	60 minutes	€5.00

On-site Facilities

- Car parking - accessible parking is available at the front of the house.
- Coach parking.
- On-site coffee van.
- Toilets.

Booking Details

T: +353 (0)87 938 4907 **E:** annesgrove.gardens@opw.ie

Languages

Leaflet in English.

Parklands/Walks

Woodland and riverside walks, formal gardens and lawns.

Tea Rooms

On site coffee van.

Nearby

Doneraile Estate, Nano Nagle Place, Cahir Castle.

Biodiversity

The OPW Biodiversity Action Strategy 2022-2026, involves implementing biodiversity-friendly management measures at heritage sites, including pollinator-friendly grass management; maintaining diverse wild plant communities; sustainable trees management practices; bat friendly low lighting levels; mechanical weed control allowing minimal use of pesticides, chemicals and fertilizers; planting of native varieties, etc., at key locations.

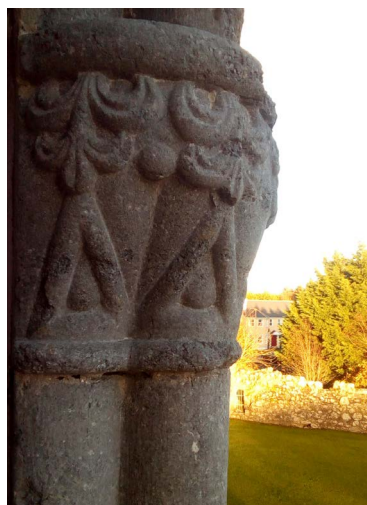
Sustainability

In line with the OPW's Sustainability Strategy, we aim to reduce energy consumption and Green House Gas Emissions, avoid the generation of waste through life cycle thinking and reuse and recycling, commit to 'Green' procurement of goods and services, promote use of public transport, walking and cycling routes to access heritage sites.



Athenry Castle

Co Galway



Opening Hours

March to October

Daily: 9.30 – 18.00

Last admission 17.15

October to November 5th

Daily: 9.30 – 17.00

Last admission 16.15

Location

King John Castle, Court Lane,
Athenry, Co Galway, H65 WP93

Off the M6 motorway and 25km
east of Galway City

Historic castle in one of Ireland's most notable medieval walled towns.

The story of Athenry as we know it begins in the 13th century when Meiler de Bermingham, built his castle here to form part of the defences of one of the most notable medieval walled towns in Ireland. The general location was strategically important as Athenry lies along the Esker Riada, a ridge of gravel and sediment running from east to west. The M6 motorway, which links Dublin and Galway today, largely follows this ancient route.

Meiler, (Lord of Athenry), founded the town of Athenry and started to build his castle here in 1235. By the 15th century, the de Berminghams had moved from the castle to their more comfortable Town House, in the centre of Athenry town. The castle then became a garrison for soldiers.

Today the site consists of the restored castle and outer bawn wall. The castle has many interesting medieval features such as the 13th century fine carvings on the doorway and windows in the first floor, which bear witness to the importance of this room. This local style of carving is between Romanesque and Gothic is known as School of the West.

The oldest part of the castle is the hall-keep. It is a large rectangular building originally containing only a hall at first-floor level and dark storerooms at ground level. For extra strength the lower part of the wall slopes out to form what is called a batter.

Highlights

- Various defence features such as original arrow loops and embrasures.
- Base batter which gave the castle strength and support in addition to being a defensive feature.
- Elaborate carvings in the Great Hall linked to medieval craftsmen known as the School of the West.
- Inter-mural stairway which leads to the battlements.



Visitor Experiences

EXPERIENCE	DESCRIPTION	FITNESS LEVEL	MIN/MAX NUMBERS	DURATION (APPROX.)	PRICE PER PERSON
Guided Tours of Castle (Indoors)	Tour of the castle, learn of the architecture and art of the Middle Ages. Also, the history of the de Birmingham family.	Moderate. Wheelchair access to the basement only. Guides provide a booklet of photos and points of interest in the interior for those who cannot access the floors above. Stairs to all other areas of the castle.	Min. 2 Max. 40	45 minutes	€5.00 Adult €4.00 Senior/Group €3.00 Child/Student €13.00 Family U12's Free
Self-guided Tour (Indoors and Outdoors)	A walk through the grounds and castle at your leisure. Read the bilingual panels of information on each floor. Watch the 20 minute audio-visual in your own time.	Moderate. Visitors with mobility difficulties can access the grounds and basement only. Stairs access all other areas.	Min. N/A Max. N/A	45 minutes	€5.00 Adult €4.00 Senior/Group €3.00 Child/Student €13.00 Family U12's Free

On-site Facilities

- Free parking immediately outside the castle gate to facilitate 5 cars. Paid parking close by within the town.
- Toilets on site.
- Bilingual information panels on each floor.

Booking Details

T: +353 (0)91 844 797 **E:** athenrycastle@opw.ie

Languages

Leaflets available in Irish, English and German, cost €0.50.
Audio-visual in English.

Parklands/Walks

Park and childrens' playground immediately outside the castle grounds.

Tea Rooms

None on site. Restaurants and tea rooms in the surrounding town of Athenry outside the castle gates.

Nearby

Dominican Priory of Saint Peter and Paul founded c.1241.
(The key to the priory can be requested from castle reception for a refundable deposit of €10).

Biodiversity

Surrounding the castle is the River Clarin with green parkland and childrens' playground.

The OPW Biodiversity Action Strategy 2022-2026, involves implementing biodiversity-friendly management measures at heritage sites, including pollinator-friendly grass management; maintaining diverse wild plant communities; sustainable trees management practices; bat friendly low lighting levels; mechanical weed control allowing minimal use of pesticides, chemicals and fertilizers; planting of native varieties, etc., at key locations.

Sustainability

Served by public transport.

In line with the OPW's Sustainability Strategy, we aim to reduce energy consumption and Green House Gas Emissions, avoid the generation of waste through life cycle thinking and reuse and recycling, commit to 'Green' procurement of goods and services, promote use of public transport, walking and cycling routes to access heritage sites.



Opening Hours

17th March to 20th September

Daily: 10.00 – 18.00

Last admission 17.15

Location

Boyle, Co Roscommon, F52 XE16

Located in Boyle town, off the N4
(Dublin to Sligo road)

An important site with history from monastic to military.

This Cistercian monastery was founded in the 12th century by monks from Mellifont Abbey under the patronage of the local ruling family, the MacDermotts. It was one of the most powerful of the early Cistercian foundations in Ireland and among the foremost in Connacht.

Cromwellian forces wreaked devastation when they occupied the abbey in 1659. It was further mutilated during the following centuries, when it was used to accommodate a military garrison. Despite all the violence it has suffered over the centuries, Boyle Abbey is well preserved and retains its ability to impress.

A 16th-17th century gatehouse has been restored and houses a small exhibition, where you can learn more about the abbey's gripping history.

Highlights

- Admire the unique transitional architecture of the School of the West.
- See if you can spot the enigmatic Sheela-na-gig.
- Find out about the painstaking dismantling and rebuilding of the north wall.
- Admire and try to decipher the many unique stone carvings of figures and animals.

Visitor Experiences

EXPERIENCE	DESCRIPTION	FITNESS LEVEL	MIN/MAX NUMBERS	DURATION (APPROX.)	PRICE PER PERSON
Guided Walking Tour (Outdoors)	The guide will bring the turbulent history of this atmospheric ruins to life, as it changed from a monastic site to a military garrison. Learn the reason for the contrasting architectural styles of the columns in the nave. Let the guide point out the sometimes hard to spot carvings, and ponder their meaning. Guided tour is outdoor but partially sheltered.	Mild. Some steps and uneven ground. Stones may be slippery when wet.	Min. N/A Max. 50	30 minutes	€5.00 Adult €4.00 Senior/Group €3.00 Student/Child €13.00 Family U12's Free
Indoor Exhibitions	A small exhibition upstairs in the gatehouse includes a model of the complete Abbey in it's heyday.	Mild. Accessed by a stone stairway.	Min. 10 Max. 35	15 minutes	€5.00 Adult €4.00 Senior/Group €3.00 Student/Child €13.00 Family U12's Free

On-site Facilities

- Car parking – On roadside outside site.
- Coach parking – On roadside outside site.
- Toilets, wheelchair accessible toilets.
- Almost all outdoor site accessible on gravel paths and paved surfaces. Exhibition room is upstairs.

Booking Details

T: +353 (0)71 966 2604 **E:** boyleabbey@opw.ie

Languages

Leaflets available in French, German, Italian, Spanish.

Parklands/Walks

None.

Tea Rooms

None.

Nearby

King House, Boyle; Lough Key Experience Attraction; Arigna Mining Experience.

Biodiversity

The OPW Biodiversity Action Strategy 2022-2026, involves implementing biodiversity-friendly management measures at heritage sites, including pollinator-friendly grass management; maintaining diverse wild plant communities; sustainable trees management practices; bat friendly low lighting levels; mechanical weed control allowing minimal use of pesticides, chemicals and fertilizers; planting of native varieties, etc., at key locations.

Sustainability

In line with the OPW's Sustainability Strategy, we aim to reduce energy consumption and Green House Gas Emissions, avoid the generation of waste through life cycle thinking and reuse and recycling, commit to 'Green' procurement of goods and services, promote use of public transport, walking and cycling routes to access heritage sites.



Heritage Ireland
OPW



Ireland's Hidden
HEARTLANDS

Clonmacnoise

Co Offaly



Opening Hours

November to January

Daily: 10.00 – 17.00

Last admission 1 hr before closing

Closed 24th, 25th & 26th December

February to 12th March

Daily: 10.00 – 17.30

Last admission 1 hour before closing

13th March to 31st May

Daily: 10.00 – 18.00

Last admission 1 hour before closing

June, July & August

Daily: 9.00 – 18.30

Last admission 1 hour before closing

September – mid-November

Daily: 10.00 – 18.00

Last admission 1 hour before closing

**Please Note: Car/bus park closed
outside of business hours**

Location

Clonmacnoise, Shannonbridge,
Athlone, Co Offaly, N37 V292

Located 6km from Shannonbridge
village and accessed on the R444.

22km from Athlone on the N62
and R444 through Ballinahown.

A spectacular monastery on the banks of the River Shannon.

St Ciarán founded this monastery on the banks of the River Shannon in the 6th century. The monastery flourished and became a great seat of learning, a university of its time with students from all over Europe.

The ruins include a cathedral, two round towers, three high crosses, nine churches and over 700 early Christian graveslabs.

The original high crosses, including the magnificent 10th century 'Cross of the Scriptures' are on display in a purpose built visitor centre adjacent to the monastic enclosure.

Highlights

- Original high crosses and the largest collection of pre-Norman graveslabs are on display in the purpose built Visitor Centre.
- Whisper your secrets at the 'Whispering Arch'.
- Audio-visual highlighting the long and varied history of Clonmacnoise.
- Peaceful views overlooking the majestic River Shannon.



Visitor Experiences

EXPERIENCE	DESCRIPTION	FITNESS LEVEL	MIN/MAX NUMBERS	DURATION (APPROX.)	PRICE PER PERSON
Clonmacnoise Visitor Centre and Site (Outdoors and Indors)	<p>Guided tours of the Monastic site and Visitor Centre with trained tour guides. All groups must be pre-booked and arrive at confirmed times only.</p> <p>Option 1: Access to the monastic site and exhibition area, guided tour with a local guide and viewing of the audio-visual.</p> <p>Option 2: Access to the monastic site and exhibition area, guided tour with a local guide, NO audio-visual.</p> <p>The guided tour includes access to the original high crosses which are preserved in a specially controlled environment.</p>	<p>Mild.</p> <p>On flat surface indoors and wheelchair accessible.</p> <p>Outdoors there are uneven surfaces.</p>	<p>Min. 15</p> <p>Max. 55</p>	60 minutes	<p>€8.00 Adult</p> <p>€6.00 Senior/Group</p> <p>€4.00 Child/Student</p> <p>€20.00 Family</p> <p>U12's Free</p>
Self-guided Tour (Indors and Outdoors)	Access to the monastic site and exhibition area is also available.	<p>Mild.</p> <p>On flat surface indoors and wheelchair accessible.</p> <p>Outdoors there are uneven surfaces.</p>	<p>Min. N/A</p> <p>Max. 15</p>	60 minutes	<p>€8.00 Adult</p> <p>€6.00 Senior/Group</p> <p>€4.00 Child/Student</p> <p>€20.00 Family</p> <p>U12's Free</p>
Audio Visual (Indors)	Suitable for children from 10 years of age.	<p>Mild.</p> <p>On flat surface indoors and wheelchair accessible.</p> <p>Outdoors there are uneven surfaces.</p>	<p>Min. N/A</p> <p>Max. 54</p>	22 minutes	<p>€8.00 Adult</p> <p>€6.00 Senior/Group</p> <p>€4.00 Child/Student</p> <p>€20.00 Family</p> <p>U12's Free</p>

On-site Facilities

- Car park located 50m from entrance to Visitor Centre entrance over flat ground.
- Free car parking available during business hours (40 spaces and 2 wheelchair accessible spaces).
- Coach parking located 50m from Visitor Centre entrance over flat ground.
- Free coach parking available for pre-booked groups/customers only. Photo stops not permitted. (7 coach park bays available).
- Toilets, wheelchair accessible toilets, and baby changing facilities.
- Picnic tables.

Booking details

T: +353 (0)46 942 2060

General enquiries

E: clonmacnoise@opw.ie

Group requests/reservations

E: clonmacnoisebookings@opw.ie

Languages

Leaflet available in Irish, English, French, Italian, German, Spanish – €0.50 each. Official guide book available in English – €5.00. Audio-visual in English, German, French, and Italian.

Parklands/Walks

None.

Tea Rooms

No catering facilities on site.

Nearby

Lough Boora Parklands, 25min drive

Birr Castle, 30min drive

Corlea Trackway, 45min drive

Athlone Castle, 30min drive

Biodiversity

Clonmacnoise is located on the banks of the River Shannon, lands surrounding the monuments are SACs (Special Area of Conservation).

Sustainability

Bicycle parking available, located on the River Shannon.



Heritage Ireland
OPW



Ireland's Hidden
HEARTLANDS

Corlea Trackway Visitor Centre

Co Longford



Opening Hours

16th March to 5th November 2023

Daily: 10.00 – 18.00

Location

2 Cartron Road, Cloonbreany,
Keenagh, Co Longford, N39 XT18

Located 3km from Kenagh village
and accessed on the Longford-
Kenagh road, R357

15km from Longford or from the
Mullingar-Lanesboro road R392

The centre interprets an Iron Age bog road,
the largest of this kind to be uncovered in Europe
dating from 148BC.

Hidden away in the boglands of Longford, not far from Kenagh village, is an inspiring relic of prehistory, a togher, an Iron Age road, built in 148 BC. Known locally as the Danes' Road, it is the largest of its kind to have been uncovered in Europe.

Historians agree that it was part of a routeway of great importance. It may have been a section of a ceremonial highway connecting the Hill of Uisneach, the ritual centre of Ireland, and the royal site of Rathcroghan.

The trackway was built from heavy planks of oak, which sank into the peat after a short time. This made it unusable, of course, but also ensured it remained perfectly preserved in the bog for the next two millennia.

Highlights

- 18m stretch of ancient wooden structure permanently on display.
- Exterior walkway on the surrounding raised bog (located directly over the existing buried roadway).
- Free admission.

Visitor Experiences

EXPERIENCE	DESCRIPTION	FITNESS LEVEL	MIN/MAX NUMBERS	DURATION (APPROX.)	PRICE PER PERSON
Corlea Trackway Visitor Centre Guided Tour (Indoors)	Pre-booked guided tours of the Corlea Trackway Visitor Centre with trained tour guides. The guided tour includes access to the original trackway which is preserved in a specially controlled environment.	Mild. Indoors on flat surface and wheelchair accessible.	Min. 10 Max. 50	45 minutes	Free admission
Self-guided Tour & Audio-visual (Indoors)	Self-guided visit to the exhibition area is also available. Audio-visual available (English) detailing the discovery and excavation of the trackway.	Mild. Indoors and wheelchair accessible.	Min. N/A Max. 61	17 minutes	Free admission
Walk (Outdoors)	A section of the guided tour takes place on the raised bog; highlighting the flora and fauna.	Mild. On flat surfaces and wheelchair accessible.	Min. N/A Max. 61		Free admission

On-site Facilities

- Car park is located 50m from entrance to Visitor Centre entrance. Free car parking available during business hours (20 spaces).
- Coach park is located 50m from Visitor Centre entrance, over flat ground). Free coach parking available for customers (2 coach park bays).
- Toilets, wheelchair accessible toilets, baby changing facilities.
- Picnic tables.

Booking details

T: +353 (0)43 332 2386 **E:** ctrackwayvisitorcentre@opw.ie

Languages

Audio-visual available in English only. Leaflet available in English only, €0.50.

Parklands/Walks

Walks throughout the site on raised bog.

Tea Rooms

No catering facilities available on site.

Nearby

Adjacent to the 5km looped canal and bogland walkway/cycleway/Greenway
Ballymahon village, 5 min drive
Centreparks, 10 min drive
Adjacent to the Royal Canal Cycleway

Biodiversity

The bogland surrounding the visitor centre is a living, breathing raised bog which contains an abundance of flora and fauna.

Sustainability

Bicycle parking available, located on the Royal Canal Cycleway.



Parklands Opening Hours

Daily: 9.00 – 17.00

House Tours

31st March to 22nd October

Average length of visit: 1-2 hours

Location

Doneraile, Co Cork, P51 A899

North Cork's 'real-life Downton Abbey'.

Located in County Cork, Doneraile Court was the home of the St Leger family from 1637 until 1969 when it came into State care and is now managed by the OPW. The house is set in a magnificent 18th century Capability Brown-style landscape, which frames it from different vistas within the park.

The landscape has many specimen trees dating from this period, including many Oak, Beech, Spanish Chestnut and Lime. Some Larch trees on the estate are believed to be the first specimens planted in the 1730s. There are also many water features on the estate. The River Awbeg flows through the middle of the park and is considered to be one of the keystones of Capability Brown's design.

Highlights

- Enjoyable walks through a historic landscape.
- Beautiful vistas of the house and a chance to view the Red, Sika and Fallow deer in their natural environs throughout the parkland.
- New events programme for 2023 with links to Doneraile's literary past.

Visitor Experiences

EXPERIENCE	DESCRIPTION	FITNESS LEVEL	MIN/MAX NUMBERS	DURATION (APPROX.)	PRICE PER PERSON
Guided Tour of House (Indoors)	Join our expert guides for an informative and entertaining tour of Doneraile House, detailing the family history of the St Legers and restoration of the house, which was completed in 2019.	Moderate. Stairs. Access for wheelchair users to ground floor only.	Min. 10 Max. 30	60mins	Doneraile Court is currently closed while restoration of the historic rooms on the first floor continues.
Self-guiding Walks (Outdoors)	The house is set in a magnificent 18th century Capability Brown-style landscape, which frames it from different vistas within the park. Enjoy the majestic specimen tress and deer herd.	Moderate. Mix of tarmac and gravel paths, open water features are present.	Min. N/A Max. N/A	N/A	Free

On-site Facilities

- Coach and car parking available 500m walk from house.
- Toilets.
- Wheelchair parking and changing places toilet available at main house.

Booking Details

T: +353 (0)87 349 7972 **E:** doneraile.court@opw.ie

Languages

English.

Parklands/Walks

Explore the grounds and gardens with a Garden Trail and Children's Tree Trail Map doneraileestate.ie

Tea Rooms

Open daily. Contact Catoca **T:** +353 (0)57 863 3964
E: info@catocafinefood.com

Nearby

Desmond Castle, Cahir Castle, Swiss Cottage, the Main Guard, Blarney Castle, Cork City, Limerick City, Bunratty Castle.

Biodiversity

The OPW Biodiversity Action Strategy 2022-2026, involves implementing biodiversity-friendly management measures at heritage sites, including pollinator-friendly grass management; maintaining diverse wild plant communities; sustainable trees management practices; bat friendly low lighting levels; mechanical weed control allowing minimal use of pesticides, chemicals and fertilizers; planting of native varieties, etc., at key locations.

Sustainability

In line with the OPW's Sustainability Strategy, we aim to reduce energy consumption and Green House Gas Emissions, avoid the generation of waste through life cycle thinking and reuse and recycling, commit to 'Green' procurement of goods and services, promote use of public transport, walking and cycling routes to access heritage sites.



Heritage Ireland
OPW



Ireland's Hidden
HEARTLANDS

Parke's Castle

Co Leitrim



Opening Hours

17th March to 5th November

Daily: 10.00 – 18.00

Last admission 17.15

Location

Kilmore, Fivemilebourne,
Co Leitrim, F91 FP71

Walk in the footsteps of Planters and Gaels.

A beautifully restored 17th century Plantation Manor House, Parke's Castle sets on the shores of Lough Gill, the lake of light. In the courtyard, the foundations of an earlier Gaelic tower house can be seen.

Take a guided tour and learn about the families, Gaelic and Planter, who lived here, the O'Rourkes and the Parkes. Discover what life was like in the 16th and 17th centuries, through the transition from the Kingdom of Breifne to the County of Leitrim. Stand on the battlements and admire the spectacular views of the Lough Gill, a landscape that inspired WB Yeats to write *The Lake Isle of Innisfree*.

Watch a short film, *Stone by Stone*, to explore the history and heritage of the surrounding area. The interior of the castle, restored with Irish Oak, includes an exquisitely crafted, left-handed spiral staircase, an exhibition of traditional cottages, and examples of period dress and furnishings. Outside, visit the forge and the dovecote, or follow the path along the lakeshore that leads to the sweathouse, where locals once gathered to practice folk medicine. This tranquil setting boasts a long and varied history, beautiful views and excellent craftsmanship.

Highlights

- Restored manor house interior featuring Irish oak, including the left-handed, Irish oak spiral staircase.
- Examples of period furnishings and dress.
- Vernacular architecture exhibition and traditionally thatched forge.
- Rural lakeshore location with battlements overlooking the stunning Lough Gill.

Visitor Experiences

EXPERIENCE	DESCRIPTION	FITNESS LEVEL	MIN/MAX NUMBERS	DURATION (APPROX.)	PRICE PER PERSON
Guided Tour (Indoors & Outdoors)	Guided tour of the courtyard, the gatehouse, manor house and defensive tower which includes the vernacular exhibition. Outside the tour visits the dovecote, forge, moat, garden area and concludes at the sweathouse.	Moderate. Steps, stairs, spiral staircase, cobbled areas, flagged path, high wall walks with railings, grassy area.	Min. N/A Max. 25	60 minutes	€5.00 Adult €4.00 Senior/Group €3.00 Child/Student €13.00 Family
Short Guided Tour (Outdoors)	This tour is geared towards visitors with mobility issues. It is designed to provide visitors with a history of the castle from the courtyard. It is a short 20 minute talk on Parke's Castle history.	Mild. Level path in courtyard through cobbled area.	Min. N/A Max. 30	20 minutes	€5.00 Adult €4.00 Senior/Group €3.00 Child/Student €13.00 Family

On-site Facilities

- Visitor's toilets, disabled toilet, baby changing.
- Car park adjacent to site.

Booking Details

T: +353 (0)71 916 4149 **E:** parkescastle@opw.ie

Languages

Self-guided leaflet available for use on site in 19 different languages. OPW leaflet for sale in English and Irish, €0.50 each. Audio-visual in English, French, German and Italian.

Parklands/Walks

Garden area at the castle including a short, paved path along the lakeshore. Nearby, the lovely Cartron Glen (Troll Wood) walk follows a stream up through Cartron Glen (moderate incline), through mature beech trees.

Tea Rooms

None.

Nearby

Creevelea Friary, 9km
Deerpark, 5km
O'Rourke's Table, 4km
Sligo Abbey, 11km
Isle of Innisfree, 3km

Biodiversity

Parke's Castle is situated on the shores of Lough Gill, an ideal location for bats. Both the structure and the trees and shrubs on site provide a nesting place for many species of bird including migratory sand martins and swallows. Areas of grass are left to become meadow and a nearby wood is swathed in bluebells in the spring.

Sustainability

Great care is taken to manage the site in a way that protects the nesting migratory birds that call the castle home each summer, as well as being mindful of our proximity to Lough Gill – the source of Sligo Town's drinking water. Each room has movement activated sensors for lighting to reduce energy use.



Portumna Castle and Gardens

Co Galway



Opening Hours

March to end of October

Daily: 10.00 – 18.00

Last admission 17.15

29th October to November 5th

Daily: 10.00 – 17.00

Last admission 16.15

Location

Portumna, Co Galway, H53 YK27

Eastbound on N65 at Portumna turn right to Castle Avenue. Proceed to Portumna Castle entrance.

Westbound on N65 at Portumna turn left to Dominic Street, follow through to Abbey Street. Proceed to Portumna Castle entrance.

Experience Portumna Castle and Gardens, gateway to the West of Ireland.

Portumna Castle is sited strategically on the shores of Lough Derg and on the banks of the River Shannon. Built by Richard Burke, 4th Earl of Clanricarde and his wife Frances Walsingham by 1618. This unique example of a Jacobean semi-fortified house is of huge architectural importance, highlighting the transition from medieval tower house to Renaissance style manor house. The castle was the main seat of the Burke family until it was gutted by an accidental fire in 1826. The Burke family held their estates at Portumna for almost 300 years.

The Burke family are descended from the Norman family of de Burgo, who came over to Ireland in 1185 with Prince John. De Burgos established themselves in Connacht through grants and conquests. Their descendants would go on to divide Connacht, where the southern territory of Upper Mc William became the ancestral homes of the Clanricardes. During the policies of King Henry VIII, the title 'Earl of Clanricarde' was granted to the family. The seat of power at Loughrea was moved to Portumna when Richard, 4th Earl of Clanricarde built his castle there.

Since 1968, major conservation work has been carried out to the fabric of the building as well as the walls, gardens and gateways. The castle has been re-roofed and the massive chimney stacks have been reinstated. Restoration works by skilled OPW craftsmen is ongoing and parts of the castle are off limit.

The grounds incorporate the 17th century formal gardens, Italian-style Tuscan Gate, the Ladies Garden and the restored 17th century walled kitchen garden. A walk in the gardens provides an experience for the senses with seasonal changes of flowers, fruit, vegetables and herbs, creating an ideal biodiverse haven for butterflies, bees and resident red squirrels.

Highlights

- Children love the willow Maze in Kitchen Garden
- Ladies Garden 17th century type roses in bloom (June/July)
- Gallery houses local and national art exhibitions through out the year.
- Story of Fury, a little dog that saved a girl's life from a fall off the castle
- Tea Room in the recently restored 17th century coach house to the east of the castle.

Visitor Experiences

EXPERIENCE	DESCRIPTION	FITNESS LEVEL	MIN/MAX NUMBERS	DURATION (APPROX.)	PRICE PER PERSON
Guided Tours of Castle (Indoors and Outdoors)	Full guided tour of the formal gardens, defensive and architectural features and ground floor of castle including the history of the Burke family.	Mild. Castle ground floor not wheelchair accessible. Information book for ground floor available for users. Flat gravel pathways on grounds are wheelchair accessible.	Min. 2 Max. 40* *Bigger groups can be divided	45 minutes	€5.00 Adult €4.00 Senior/Group €3.00 Child/Student €13.00 Family U12's Free
Self-guided Tour of Castle (Indoors and Outdoors)	Information at reception areas. Interpretive panels and audio-visual on the ground floor of castle.	Mild. Castle ground floor not wheelchair accessible. Information book for ground floor available for users. Flat gravel pathways on grounds are wheelchair accessible.	Min. N/A Max. N/A	At your leisure	€5.00 Adult €4.00 Senior/Group €3.00 Child/Student €13.00 Family U12's Free
Guided Tour of 17th Century Kitchen Garden (Outdoors) Pre-booking essential	Full guided tour of the 17th century working walled Kitchen Garden. Learn about herbs grown in the borders of the garden, learn of their uses as traditional remedies and the pollinator friendly area that creates a beneficial eco-system.	Mild. Flat gravel pathways are wheelchair accessible.	Min. 2 Max. 30	45 minutes	€5.00 Adult €4.00 Senior/Group €3.00 Child/Student €13.00 Family U12's Free
Self-guided Tour of 17th Century Kitchen Garden	Reception will facilitate any queries	Mild. Flat gravel pathways are wheelchair accessible.	Min. N/A Max. N/A	At your leisure	€5.00 Adult €4.00 Senior/Group €3.00 Child/Student €13.00 Family U12's Free

On-site Facilities

- Free car parking for approximately 30 cars. The main car park is 200m from reception.
- Free coach parking for 2/3 coaches, approx. 200m from reception.
- On-site Tea Room in coach house block
- Gift shop.
- Toilets, wheelchair accessible, baby changing facilities.

Booking Details

T: +353 (0)90 974 2003 **E:** portumnacastle@opw.ie

Languages

Visitors guides are sold in Irish, English, German and French €0.50 each. All information panels are bilingual.

Parklands/Walks

Portumna Castle is surrounded by Portumna Forest Park with its varied cycling and walking trails.

Tea Rooms

Run by CaToCa Catering. Open daily.

T: +353 (0)90 974 1667 or +353 (0)86 617 3534

Nearby

Portumna Forest Park, Lough Derg and River Shannon, River Shannon's Connacht Harbour Marina and Castle Marina, Dominican Priory Ruins, Clonmacnoise, Athenry Castle, Roscrea Heritage Centre.

Biodiversity

Portumna Castle's 17th century walled kitchen garden is an organic vegetable and flower garden. There are plenty of pollinators throughout the site including the native black honey bee, who not only live in the gardens but also inhabit the arrow loops and musket holes in the castle building. Portumna Forest Parks has native flora and fauna which includes the red squirrel and fallow deer.

Sustainability

In line with the OPW's Sustainability Strategy, we aim to reduce energy consumption and Green House Gas Emissions, avoid the generation of waste through life cycle thinking and reuse and recycling, commit to 'Green' procurement of goods and services, promote use of public transport, walking and cycling routes to access heritage sites.