



## Welcome to Brú na Bóinne, Knowth and Newgrange

You are doing the Newgrange Tour + Exhibition  
There are 2 parts to this tour



**PLEASE BOOK YOUR TICKETS ONLINE  
BEFORE YOUR VISIT**

### 1. Brú na Bóinne Visitor Centre

This is where you collect your tickets

There is an exhibition with lots of information

There is a café and gift shop



### 2. Newgrange

It is a 5000 year old tomb

You do not go inside on this tour

There is lots to see on the outside

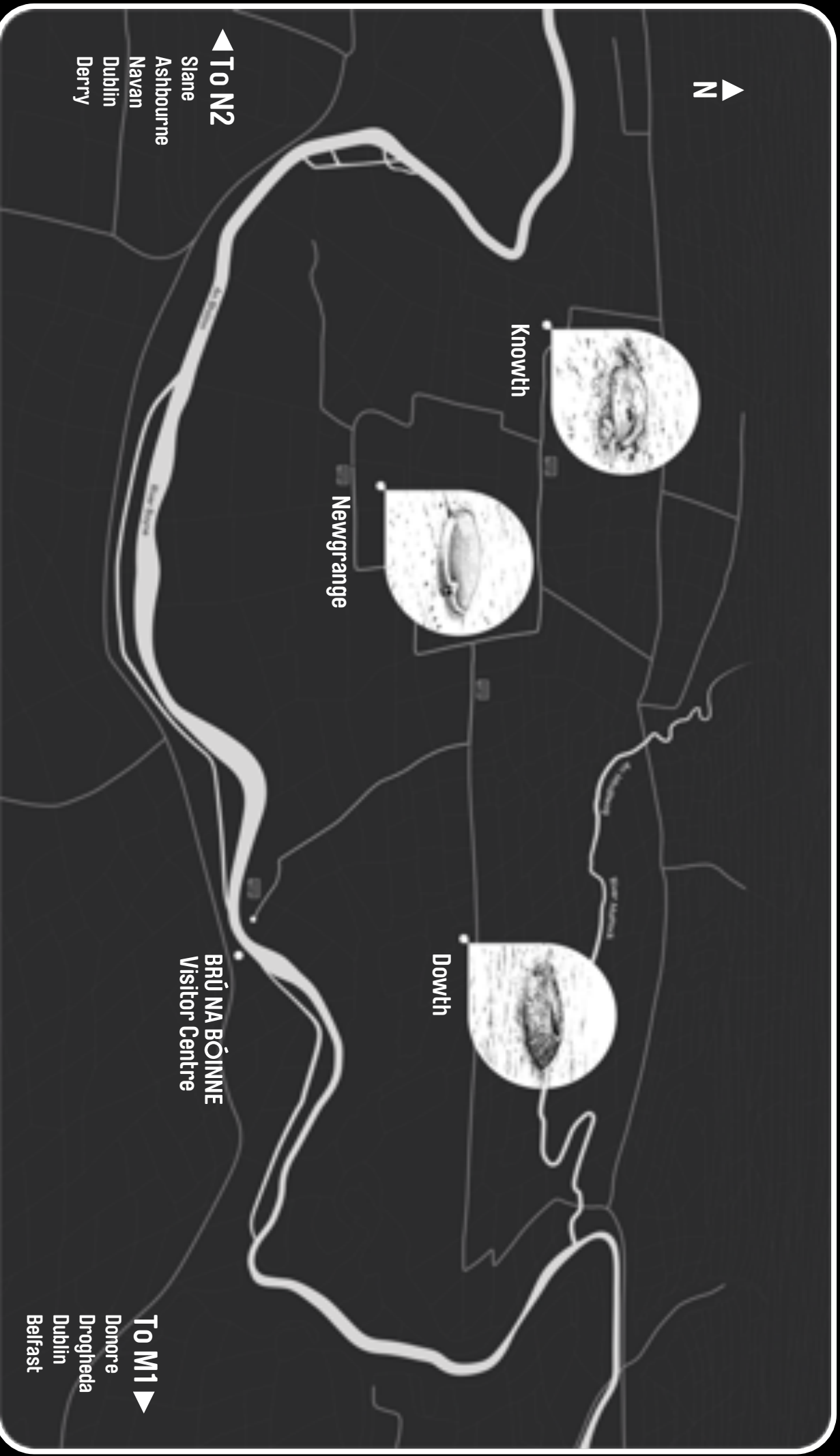
**Please Note: Knowth is not included  
on this tour**

## Where are we?

The Visitor Centre is beside Donore village in county Meath

The Visitor Centre is about 3km from the monuments

We will bring you on our shuttle buses to see the monuments



In this story we'll learn about how to enter Brú na Bóinne Visitor Centre, Knowth and Newgrange. You will also find out what to expect to see during your visit.



### **The Entrance to the Carpark**

The entrance to the carpark is beside these flags



The entrance for cars is on the left



In the carpark there is a covered pergola path

If you follow this path it will lead you to the entrance of the visitor centre

This path is 250 long and will take 5 minutes to walk



## The Entrance

There is a map and some helpful information on this pathway



This is the entrance to the visitor centre

The doors here are automatic



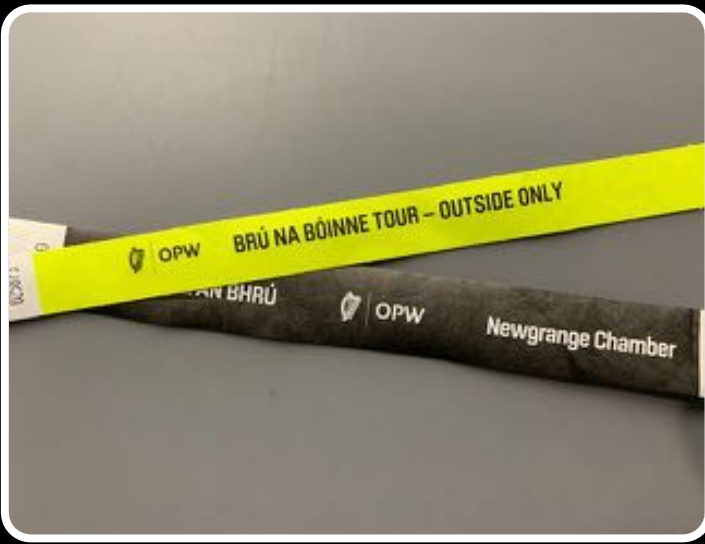
You will meet some of our friendly guides



This is the reception area

There are 2 desks for collecting tickets

One of our guides will help you here



## The Reception

When you collect your tickets you will get a wristband.

You must wear this during your visit



## The Exhibition

The exhibition is behind the reception area

It will tell you all about Brú na Bóinne



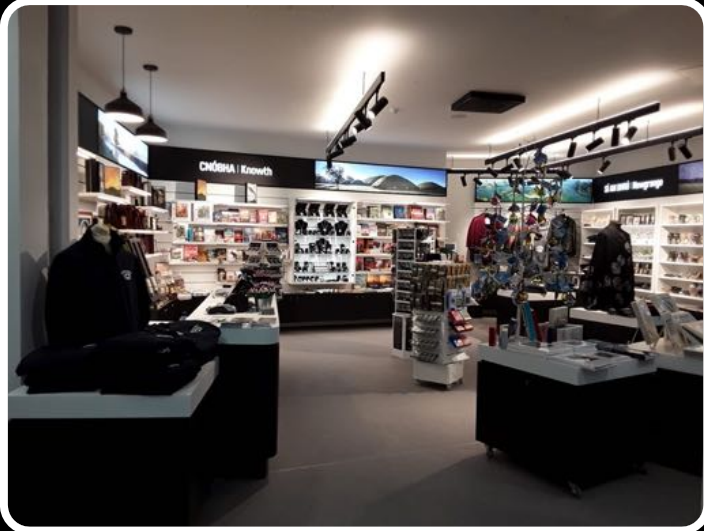
## The Exhibition includes:

- Written information
- Photographs, animations & illustrations
- Audio visuals
- An interactive seasons game
- Sounds from the Stone Age
- Flashing images (you can avoid this area)
- A replica of the passage and chamber at Newgrange





Downstairs in the Visitor Centre  
There is a café



A Gift Shop



A Boyne Valley sites of interest  
map and film



A temporary exhibition area



## Way out to Monuments

These are the doors you will use to get to the monuments

It is 300m from these doors to the bus stop

It will take about 7 minutes to walk

You can push these doors open



This is the bridge over the River Boyne



Follow the path after the bridge and it will lead you to the bus stop



## The Bus Stop

The bus stop is almost hidden from view



This is where you wait for your bus

There are no toilets at the bus stop



The time of your bus is on your ticket and wristband

There will be other people waiting here to visit the sites with you



## The Brú na Bóinne Buses

The bus will bring you to Newgrange

The bus journey from here to Newgrange is about 7 minutes

Our drivers will be happy to help if you need any assistance here





## Newgrange

You will be here for about 45 minutes



This is the entrance gate to the site

The bus will drop you beside it



Walk up this path to the green building

This is where you will meet your guide



This is the entrance to Newgrange

There are some steps to climb to go inside

A guide will bring you and the other members of the group inside



You will have to leave bags in one of these containers

Your guide will lock it to keep it safe



The passage inside is narrow and low in places

It is safe inside but you don't have to go inside if you feel uncomfortable

There are lights in the passage and chamber



This is the chamber inside Newgrange

The guide will turn off the lights to show you what it is like when the sun shines in on winter solstice



The toilets at Newgrange are across the road from the site

After your tour, the bus will collect you from Newgrange and bring you back to the Visitor Centre



The bus will bring you back to the bus stop at the Visitor Centre again

This is a 7 minute bus journey

When you return to the Visitor Centre, you will enter on the lower level

Go upstairs to find the way out and back to your car



This is the exit or way out of the Visitor Centre

It will bring you to the pergola path you originally came in on

**We hope you enjoy your visit to Brú na Bóinne**



**OPW**

Oifig na  
nOibreacha Poiblí  
Office of Public Works

**BRÚ NA BÓINNE**